



Molding High Current Inductors - ML322512T-A SERIES



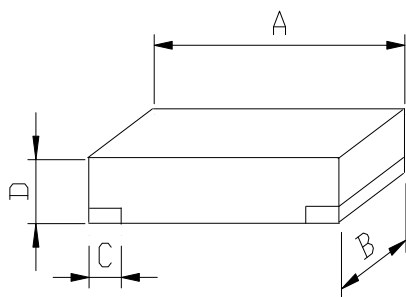
PART NUMBERING SYSTEM

(AEC-Q200)

ML	322512T	—	R68M	—	LF	—	A
TYPE	DIMENSIONS		INDUCTANCE		LEAD FREE		Automotive

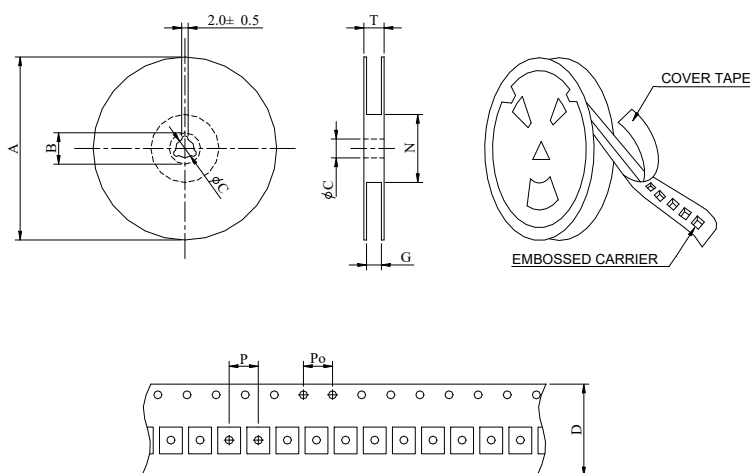
SHAPES AND DIMENSIONS

UNIT : mm



A= 3.2±0.3 B=2.5±0.3 C=0.8±0.3 D=1.2 Max.

PACKAGING SPECIFICATION



SERIES	STAYLE	Q'TY (PCS)	DIMENSIONS (m/m)								
			A	B±0.8	C±0.5	D	G ⁺	N ⁰	P	Po	T
ML322512T-A	178	2,000	178	21	13	8	18	50	4	4	22.4



Molding High Current Inductors - ML322512T-A SERIES



SPECIFICATION TABLE

(AEC-Q200)

PART NUMBER	INDUCTANCE (μ H)	DCR (m Ω) Max. (Typ.)	Isat(A) Max. (Typ.)	Irms(A) Max. (Typ.)	TEST FREQ. (MHz)
ML322512T-R33M-LF-A	0.33 \pm 20%	13.0 (10.0)	8.50 (9.1)	8.00 (8.50)	100KHz/1V
ML322512T-R47M-LF-A	0.47 \pm 20%	19.2 (16.0)	7.40 (8.2)	6.50 (7.00)	100KHz/1V
ML322512T-R68M-LF-A	0.68 \pm 20%	24.0 (20.0)	6.80 (7.3)	5.70 (6.20)	100KHz/1V
ML322512T-1R0M-LF-A	1.00 \pm 20%	32.0 (26.0)	5.70 (6.5)	5.00 (5.50)	100KHz/1V
ML322512T-1R5M-LF-A	1.50 \pm 20%	53.0 (44.0)	4.50 (5.0)	3.90 (4.40)	100KHz/1V
ML322512T-2R2M-LF-A	2.20 \pm 20%	73.0 (61.0)	4.30 (4.8)	3.60 (4.00)	100KHz/1V
ML322512T-3R3M-LF-A	3.30 \pm 20%	101 (87.0)	3.00 (3.4)	2.90 (3.1)	100KHz/1V
ML322512T-4R7M-LF-A	4.70 \pm 20%	146 (122)	2.40 (2.8)	1.90 (2.2)	100KHz/1V
ML322512T-5R6M-LF-A	5.60 \pm 20%	204 (170)	1.90 (2.2)	1.60 (1.9)	100KHz/1V
ML322512T-6R8M-LF-A	6.80 \pm 20%	220 (183)	1.50 (1.8)	1.40 (1.7)	100KHz/1V
ML322512T-8R2M-LF-A	8.20 \pm 20%	298 (248)	1.40 (1.7)	1.30 (1.6)	100KHz/1V
ML322512T-100M-LF-A	10.0 \pm 20%	330 (274)	1.30 (1.6)	1.20 (1.5)	100KHz/1V

FEATURES

1. **Magnetic shielding** allows high-density mounting
2. **Ultra-small shielded power inductor** – only 1.2 mm high, 3.5× 2.5 mm footprint
3. Handles **current up to 9.1 Amps**
4. Excellent mounting strength by SMD chip making
5. **Isat** means that DC current will cause a **30% inductance reduction** from initial value .
6. **Irms** means that DC current will cause **coil temperature rising to 40°C** whichever is smaller.
7. **RoHS-compliant**. 260°C compatible.
8. Operating Temperature Range : -40°C to +125°C

