

## High current, low profile, miniature power inductors –

### ML252010L Series

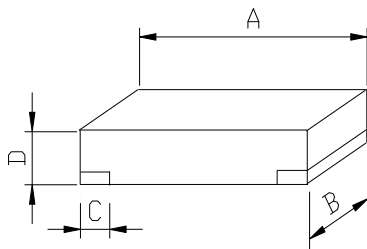


#### PART NUMBERING SYSTEM

<b>ML</b>	<b>252010L</b>	—	<b>R47M</b>	—	<b>LF</b>
TYPE	DIMENSIONS		INDUCTANCE		LEAD FREE

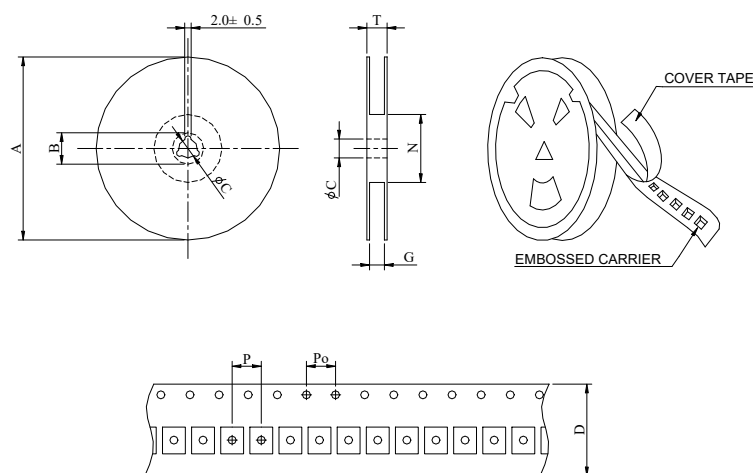
#### SHAPES AND DIMENSIONS

UNIT : mm



A= 2.5±0.3    B=2.0±0.3    C=0.6±0.3    D=1.0 Max.

#### PACKAGING SPECIFICATION



SERIES	STAYLE	Q'TY (PCS)	DIMENSIONS (m/m)								
			A	B±0.8	C±0.5	D	G <sup>+0</sup>	N <sup>-0</sup>	P	Po	T
ML252010L	178	3,000	178	21	13	8	18	50	4	4	22.4



## High current, low profile, miniature power inductors –

### ML252010L Series



#### SPECIFICATION TABLE

PART NUMBER	Inductance (uH) at 1MHz	DCR (mΩ) (max)	Isat (A) (Typ.)	Irms (A) (Typ.)	Test Frequency
ML252010L-R47M-LF	0.47±20%	25	6.5	5.2	1MHz/1V
ML252010L-1R0M-LF	1.0±20%	46	4.4	4.0	1MHz/1V
ML252010L-1R5M-LF	1.5±20%	68	3.5	2.9	1MHz/1V
ML252010L-2R2M-LF	2.2±20%	97	3.1	2.3	1MHz/1V
ML252010L-3R3M-LF	3.3±20%	168	2.5	1.8	1MHz/1V
ML252010L-4R7M-LF	4.7±20%	262	1.9	1.3	1MHz/1V

#### FEATURES

1. **Magnetic shielding** allows high-density mounting
2. **Ultra-small shielded power inductor** – only **1.0 mm** high, **2.5× 2 mm** footprint
3. Handles **current up to 6.5 Amps**
4. Excellent mounting strength by SMD chip making
5. **Isat** means that DC current will cause a **30% inductance reduction** from initial value .
6. **Irms** means that DC current will cause **coil temperature rising to 40°C** whichever is smaller.
7. **RoHS-compliant**. 260°C compatible.
8. Operating Temperature Range : -55°C to +125°C