

Three Pad High Current SMD Inductors ~SEP1407ME SERIES

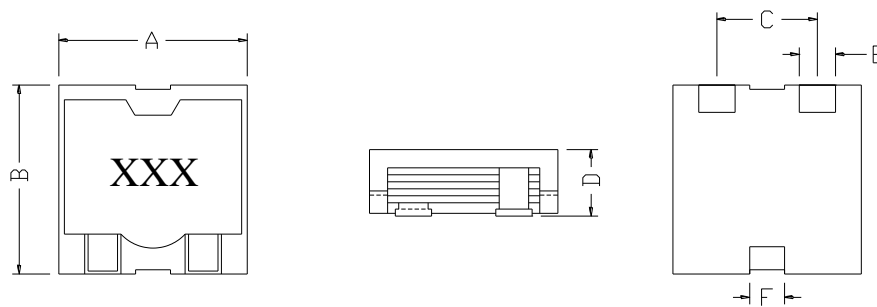


PART NUMBERING SYSTEM

SEP	1407ME	—	1R0M	—	LF
TYPE	DIMENSIONS		INDUCTANCE		LEAD FREE

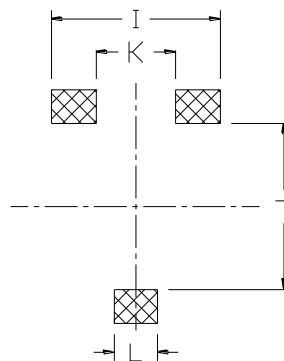
SHAPES AND DIMENSIONS :

UNIT : mm



A=14.9 Max. B=15.4 Max. C=9.0±0.5 D=8.2 Max. E=2.8 F=2.5

RECOMMENDED PATTERNS



I = 13.0 J = 10.0 K = 5.7 L = 3.5

UNIT : mm



E-mail : info@coilmaster.com.tw

3F No.211, Huan Bei Rd. Chung Li District, Taoyuan City, Taiwan

Tel : +886-3-422-8279

Fax : +886-3-452-5688

Coilmaster Electronics Co., Ltd.

Web Site : www.coilmaster.com.tw

Three Pad High Current SMD Inductors ~SEP1407ME SERIES



ELECTRICAL CHARACTERISTICS :

PART NUMBER	INDUCTANCE (μ H)	Isat (A) (Typ.)	Irms (A) (Typ.)	DCR (m Ω) (Max.)
SEP1407ME-R90M-LF	0.90 \pm 20%	45	21.5	1.5
SEP1407ME -1R5M-LF	1.5 \pm 20%	34	20	2.0
SEP1407ME -2R4M-LF	2.4 \pm 20%	28	17.5	3.2
SEP1407ME -3R4M-LF	3.4 \pm 20%	23	16	5.0
SEP1407ME-4R7M-LF	4.7 \pm 20%	19	12.5	6.0
SEP1407ME-6R1M-LF	6.1 \pm 20%	18.5	11	7.8
SEP1407ME-7R7M-LF	7.7 \pm 20%	15.5	10	9.9
SEP1407ME-9R5M-LF	9.5 \pm 20%	14	8.5	13.3
SEP1407ME-100M-LF	10 \pm 20%	11.5	10	9.9
SEP1407ME-120M-LF	12 \pm 20%	10	8.5	13.3
SEP1407ME-470M-LF	47 \pm 20%	3	2.5	27

* Test frequency AT 100KHz

* Operating temperature range : -45 $^{\circ}$ C to + 125 $^{\circ}$ C. Electrical specifications at 25 $^{\circ}$ C

* Isat: DC current at which the inductance drops 30% from its value without current.

* Irms: Average current for a 40 $^{\circ}$ C rise above 25 $^{\circ}$ C ambient.

* Electrical specifications at 25 $^{\circ}$ C.

* Low DC resistance, current handle > 25.6 Amps

* Third mounting pad for greater adhesion on board

* High current, low loss of iron powder core.

* Low profile for machine placement.

* Minimize electromagnetic interference.

* Suppress common mode noise.

* Prevent EMI effect via precise impedance