



## Three Pad High Current Power Inductors - SEP1205ME series

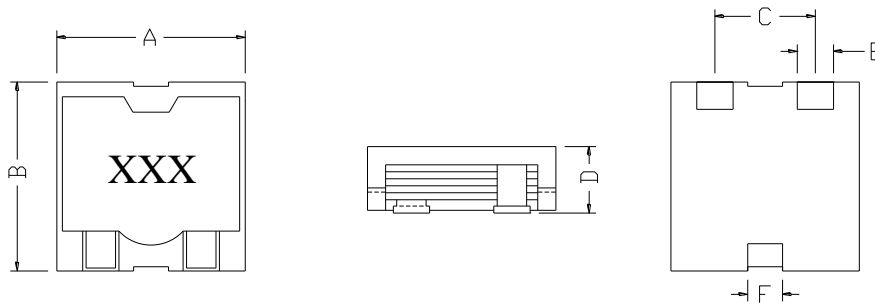


### PART NUMBERING SYSTEM

<b>SEP</b>	<b>1205ME</b>	—	<b>4R7M</b>	—	<b>LF</b>
TYPE	DIMENSIONS		INDUCTANCE		LEAD FREE

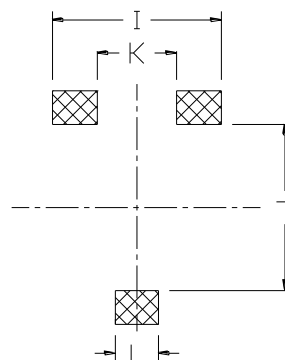
### SHAPES AND DIMENSIONS :

UNIT : mm



A=13.5 Max. B=13.0 Max. C=6.9 D=5.8 Max. E=2.5 F=2.5

### RECOMMENDED PATTERNS



I = 9.80 J = 8.00 K = 7.2 L = 3.0

UNIT : mm



## Three Pad High Current Power Inductors - SEP1205ME series



### ELECTRICAL CHARACTERISTICS :

PART NUMBER	INDUCTANCE ( $\mu$ H)	Isat ( A ) (Max.)	Irms ( A ) (Max.)	DCR (m $\Omega$ ) (Typ.)	DCR (m $\Omega$ ) (Max.)
SEP1205ME-R33M-LF	0.33 $\pm$ 20%	43.0	18.0	0.8	1.0
SEP1205ME-R65M-LF	0.65 $\pm$ 20%	28.0	16.0	2.1	2.5
SEP1205ME-1R0M-LF	1.0 $\pm$ 20%	33.5	13.0	2.7	3.0
SEP1205ME-1R8M-LF	1.8 $\pm$ 20%	20.0	13.0	2.7	3.0
SEP1205ME-2R7M-LF	2.7 $\pm$ 20%	14.0	13.0	2.7	3.0
SEP1205ME-3R3M-LF	3.3 $\pm$ 20%	14.0	9.4	5.9	6.5
SEP1205ME-4R0M-LF	4.0 $\pm$ 20%	13.0	9.4	5.9	6.5
SEP1205ME-4R7M-LF	4.7 $\pm$ 20%	12.0	9.4	5.9	6.5
SEP1205ME-6R0M-LF	6.0 $\pm$ 20%	9.5	9.4	5.9	6.5
SEP1205ME-8R0M-LF	8.0 $\pm$ 20%	9.0	7.6	9.5	11.0
SEP1205ME-100M-LF	10.0 $\pm$ 20%	7.5	7.2	9.5	11.0

\* Test frequency AT 100KHz

\* Operating temperature range : -55 $^{\circ}$ C to + 125  $^{\circ}$ C. Electrical specifications at 25  $^{\circ}$ C

\* Isat: DC current at which the inductance drops 30% from its value without current.

\* Irms: Average current for a 40 $^{\circ}$ C rise above 25 $^{\circ}$ C ambient.

\* Electrical specifications at 25 $^{\circ}$ C.