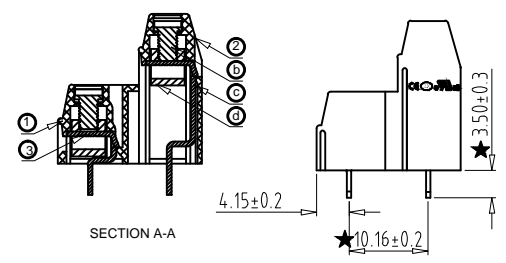
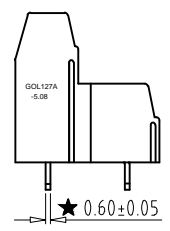
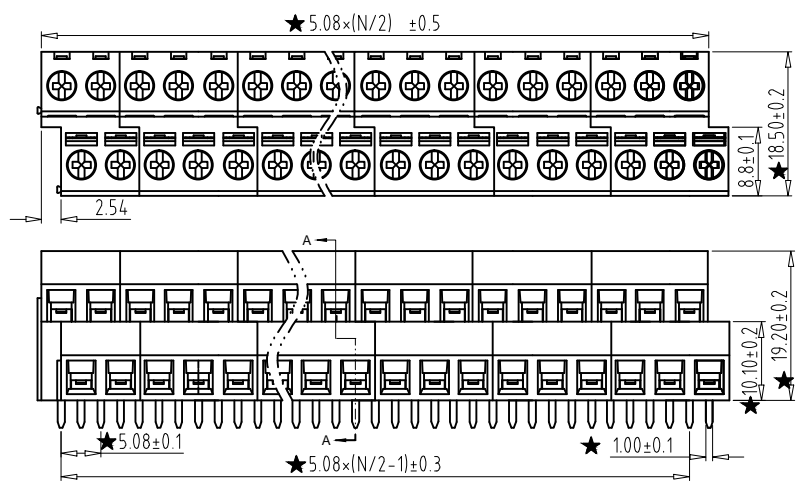
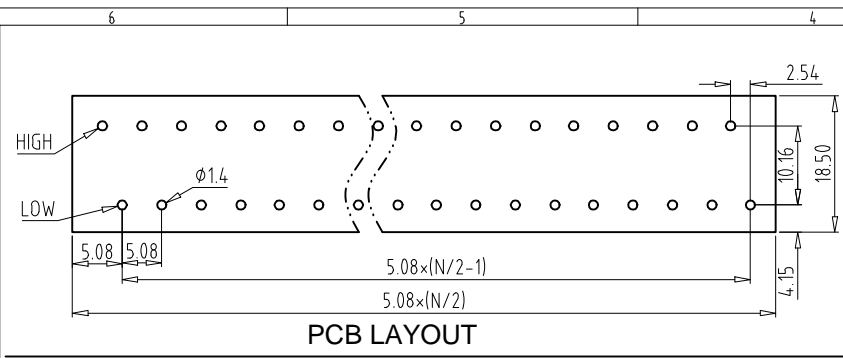


REV	CONTENT	CHK	DATE
V0.0	CONTENT	EXL	20.05.22



PHOENIX MKKDSN 1,5/2-5,08 (1726040) alternative
PCB terminal block; angled 90°; 5.08mm; ways: 4;
on PCBs; terminal

- Electrical :**
- | | | |
|-------------------------------------------|----------------|------------------------|
| | UL | IEC |
| 1. Rated Voltage : | 300V | 250V |
| 2. Rated Current : | 12A | 15A |
| 3. Torque Value : | M3 , 4.43Lb.in | M3 , 0.5N.m |
| 4. Wire Range: | 26-14AWG | 0.5-1.5mm ² |
| 5. Stripping Length : | 6-7mm | |
| 6. Withstanding Voltage : | AC2000V/1Min. | |
| 7. Operating Temperature : | -40 °C~+105 °C | |
| 8. RoHS Compliance | | |
| 9. Safty Approval : | | |
| 10. "★" is the key quality control point. | | |



- GOL127A - 5.08 -XXP - X X - 00
-
- ① Series NO. ④ 1 Single Pitch
 2 Double Pitch
 - ② Pitch ⑤ Color: 1 Grey
 2 Blue
 3 Black
 4 Green
 5 Orange
 6 Red
 7 Transparent
 8 Yellow
 9 White
 - ③ Poles
02 02Contacts
03 03Contacts
... 24 24Contacts
 - ⑥ Customer Request: 00--Standard

6	SCREW	XX	P	STEEL	Zn Plated
5	BLOCK	XX	P	BRASS	Ni Plated
4	PIN HEADER-HIGH	XX	P/2	BRASS	Tin Plated
3	PIN HEADER	XX	P/2	BRASS	Tin Plated
2	HOUSING-HIGH	XX	/	PA66 UL94V-0	
1	HOUSING	XX	/	PA66 UL94V-0	
ITEM	NAME OF PART	NO. OF PART	Q'TY	MATERIAL	NOTE
DWG.	CXL	DATE	20.05.22	SIZE	A4 UNITS mm SHEET/OF 1 / 1
CHK.	DATE			SCALE	1:1
APP.	DATE			NAME	GOL127A-5.08-XXP-XX-00
PHOENIX MKKDSN 1,5/2-5,08 (1726040) alternative				DWGNO.	XXXX

Total Pitch Tolerances in mm								Nominal dimension range in mm										⊥		≡		—		//	
over 0	over 30	over 53	over 70	over 90	over 115	over 150	over 250	over 350	over 0	over 30	over 53	over 70	over 90	over 115	over 150	over 200	over 250	over 320	over 10	over 10	0.3	0.3	0.2	0.3	0.5
±0.18	±0.20	±0.25	±0.3	±0.35	±0.44	±0.60	±0.70	±0.85	±0.20	±0.25	±0.30	±0.35	±0.44	±0.55	±0.70	±0.80	±0.90	0.2	0.3	0.3	0.3	0.2	0.3	0.5	

