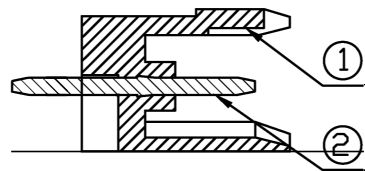


PCB LAYOUT



Weidmuller 1520160000 SL5.08/8/180B alternative

Pin Header, Top Entry, Wire-to-Board, 5.08 mm, 1 Rows,
8 Contacts, Through Hole, SL 5.08

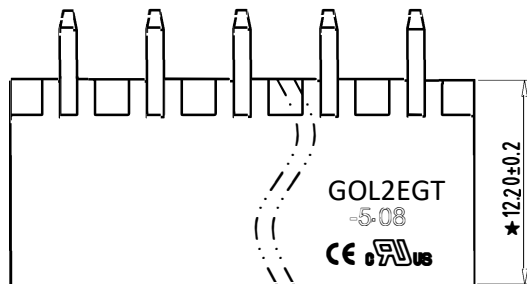
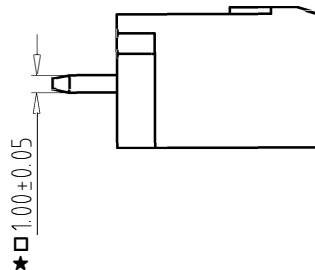
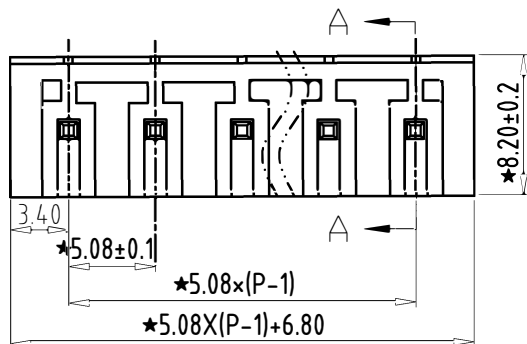
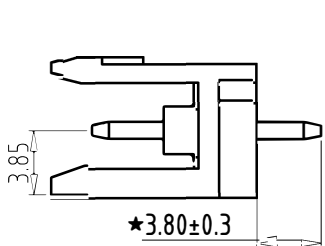


SECTION A-A

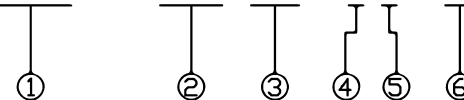
REV	CONTENT	CHK	DATE
V0.0	CONTENT	MYZ	21.07.08

Electrical

- | | | |
|---|---------------|------|
| | UL | IEC |
| 1.Rated Voltage : | 300V | 320V |
| 2.Rated Current : | 15A | 20A |
| 3.Withstanding Voltage : | AC1600V/1Min; | |
| 4.Operating Temperature : | -40°C~+105°C; | |
| 5. RoHS Compliance; | | |
| 6.Safty Approval : | cULus CE | |
| 7." * " is the key quality control point. | | |



GOL2EGTVC - 5.08 -XXP - X X - 00



- ① Series NO. ④ 1 Single Pitch
 2 Double Pitch
- ② Pitch ⑤ Color: 1 Grey
 2 Blue
 3 Black
 4 Green
 5 Orange
 6 Red
 7 Transparent
 8 Yellow
 9 White
- ③ Poles
02 02Contacts
03 03Contacts
...
24 24Contacts
- ⑥ Customer Request: 00-- Standard

2	PIN	XX	P	BRASS	Tin Plated
1	HOUSING	XX	1	PA66 UL94V-0	SEE NOTE
ITEM	NAME OF PART	NO. OF PART	Q"TY	MATERIAL	NOTE
DWG.	MYZ	DATE	21.07.08	SIZE	A4 UNITS mm SHEET/OF 1 / 1
CHK.	DATE		SCALE	1:1	
APP.	DATE				
				NAME	GOL2EGTVC-5.08-XXP-XX-00
				DWGNO.	XXXX
Weidmuller 1520160000 SL5.08/8/180B alternative					

Total Pitch Tolerances in mm										Nominal dimension range in mm										⊥	=	-	//			
over 0	over 30	over 53	over 70	over 90	over 115	over 150	over 250	over 350	over 500	over 0	over 30	over 53	over 70	over 90	over 115	over 150	over 200	over 250	over 320	over 0	over 10	all	over 0	over 100	over 150	
±0.18	±0.20	±0.25	±0.3	±0.35	±0.44	±0.60	±0.70	±0.85	±0.20	±0.25	±0.30	±0.35	±0.44	±0.55	±0.70	±0.80	±0.90	0.2	0.3	0.3	0.2	0.3	0.5			

