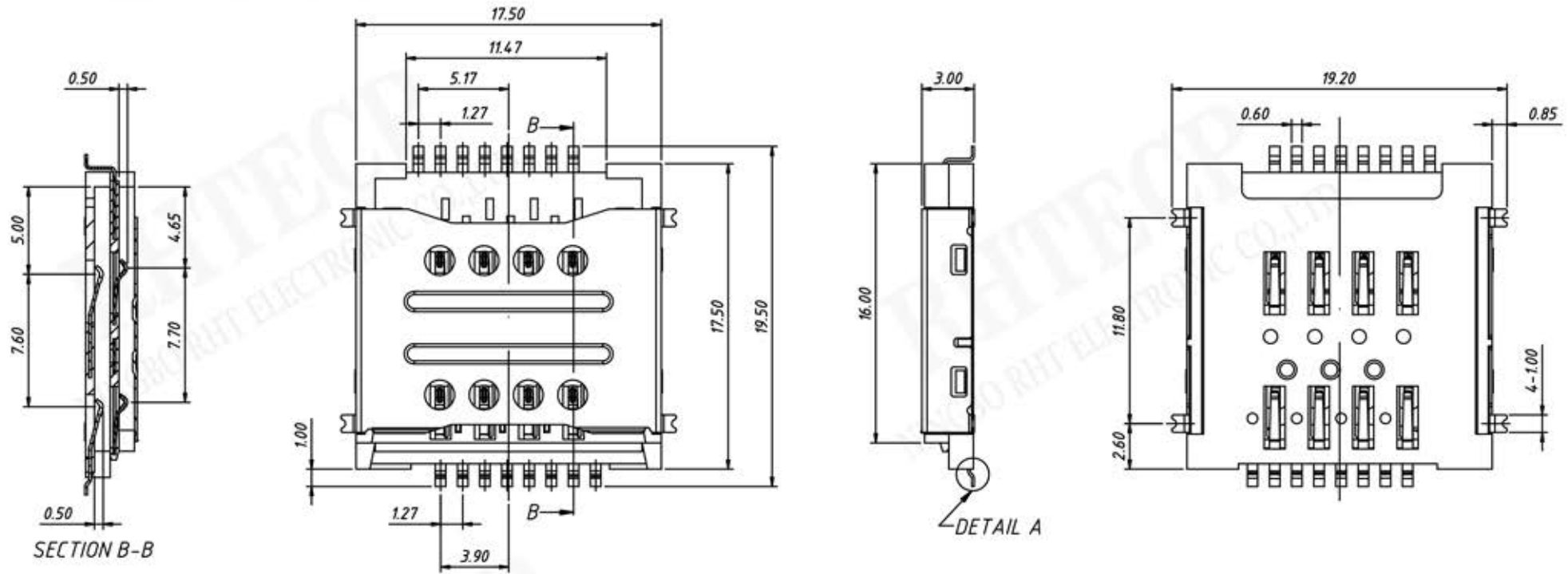


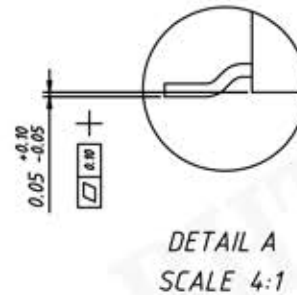
P/N:RE-C-SIM2-002A-8P-H3.0-R

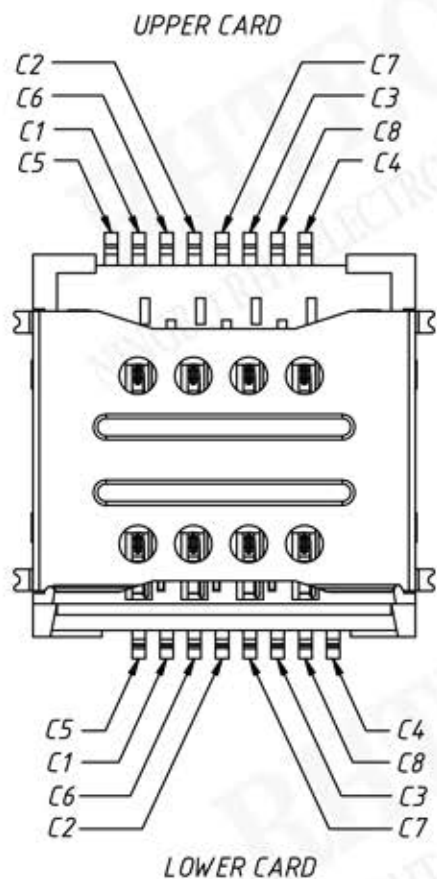


**Electrical:**  
 Contact Resistance: 50mΩ Max  
 Withstanding Voltage: 350V AC rms for 1 minut  
 Insulation resistance: 1000MΩ Min  
 Durability: 3000 cycles  
 Normal force: 20gf / PIN Min

**Material:**  
 Housing: Hi-TEMP Plastic, UL 94 V-0, Black.  
 Terminal: Copper alloy  
 Shell: Stainless Steel

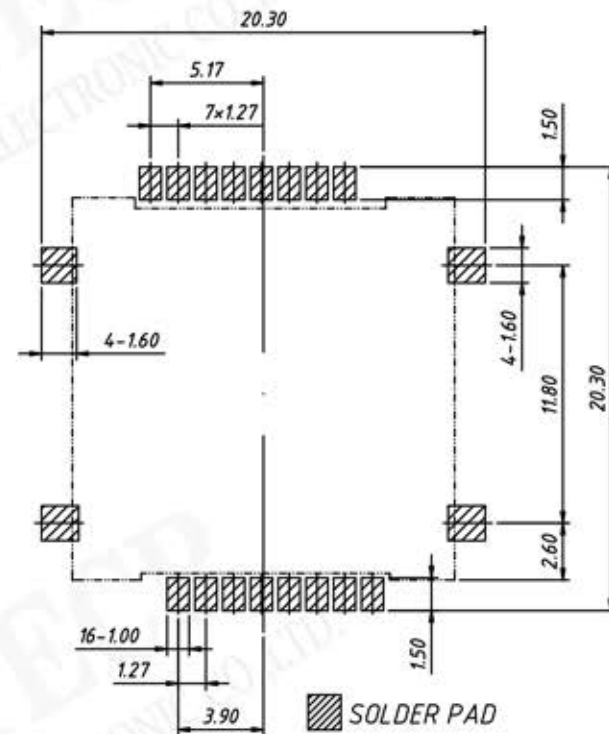
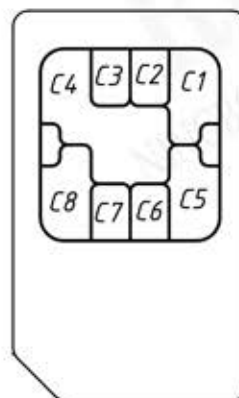
**Finish:**  
 Terminal: Au Plated on the contact area,  
 Matte tin plated on the solder  
 tails underplated over nickel  
 Shell: Au Plated on the solder tails  
 underplated over nickel





C1	C1:VCC
C2	C2:RST
C3	C3:CLK
C4	C4:RESERVED
C5	C5:GND
C6	C6:VPP
C7	C7:I/O
C8	C8:RESERVED

SIM CARD CIRCUIT



Recommended PCB Layout Tolerance  $\pm 0.05$