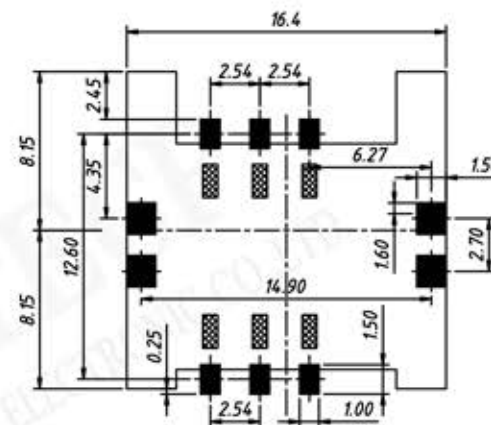
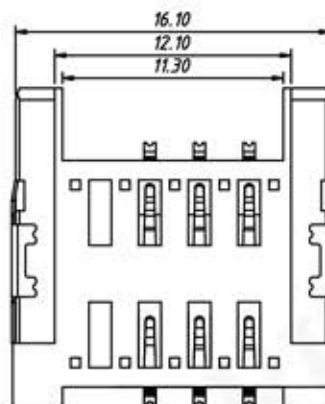
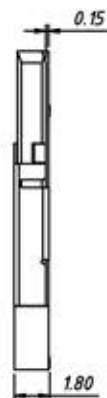
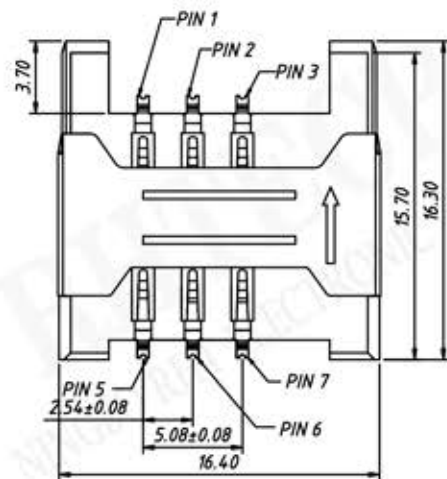


P/N: RE-C-SIM-044C



RECOMMENDED PCB LAYOUT
TOP VIEW (XX ±0.05)
 Prohibited area Solder area

Material:

Housing: High Thermoplastic, UL 94 V-0 Black.

Contact: Copper Alloy.

Shell: Stainless Steel.

Finish:

Contact: Gold Over Nickel.

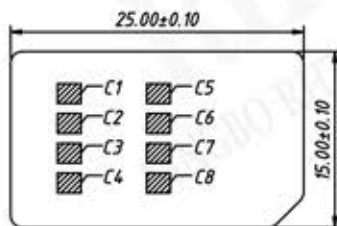
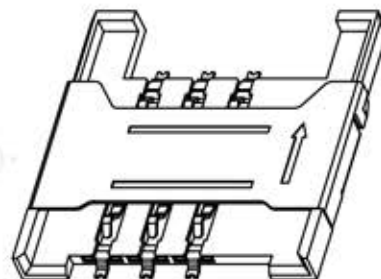
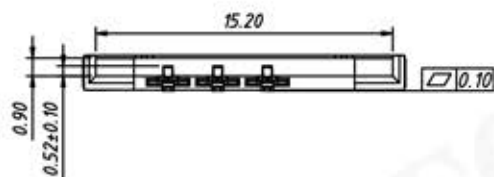
Shell: Nickel Over All Over.

Electrical:

Operating Voltage: 30V

Current Rating: 0.5 A.

Operating Temperature: -20°C TO +85°C.



- C1-VCC
- C2-RST
- C3-CLK
- C4-GND
- C5-GND
- C6-VPP
- C7-I/O
- C8-I/O

REFERENCE SIM CARD PLUG

UNITS:mm	SHEET SIZE:A4		SCALE: ---
> 0~ 3	> 3~ 18	> 18~ 50	> 50~ 120
± 0.12	± 0.15	± 0.3	± 0.5