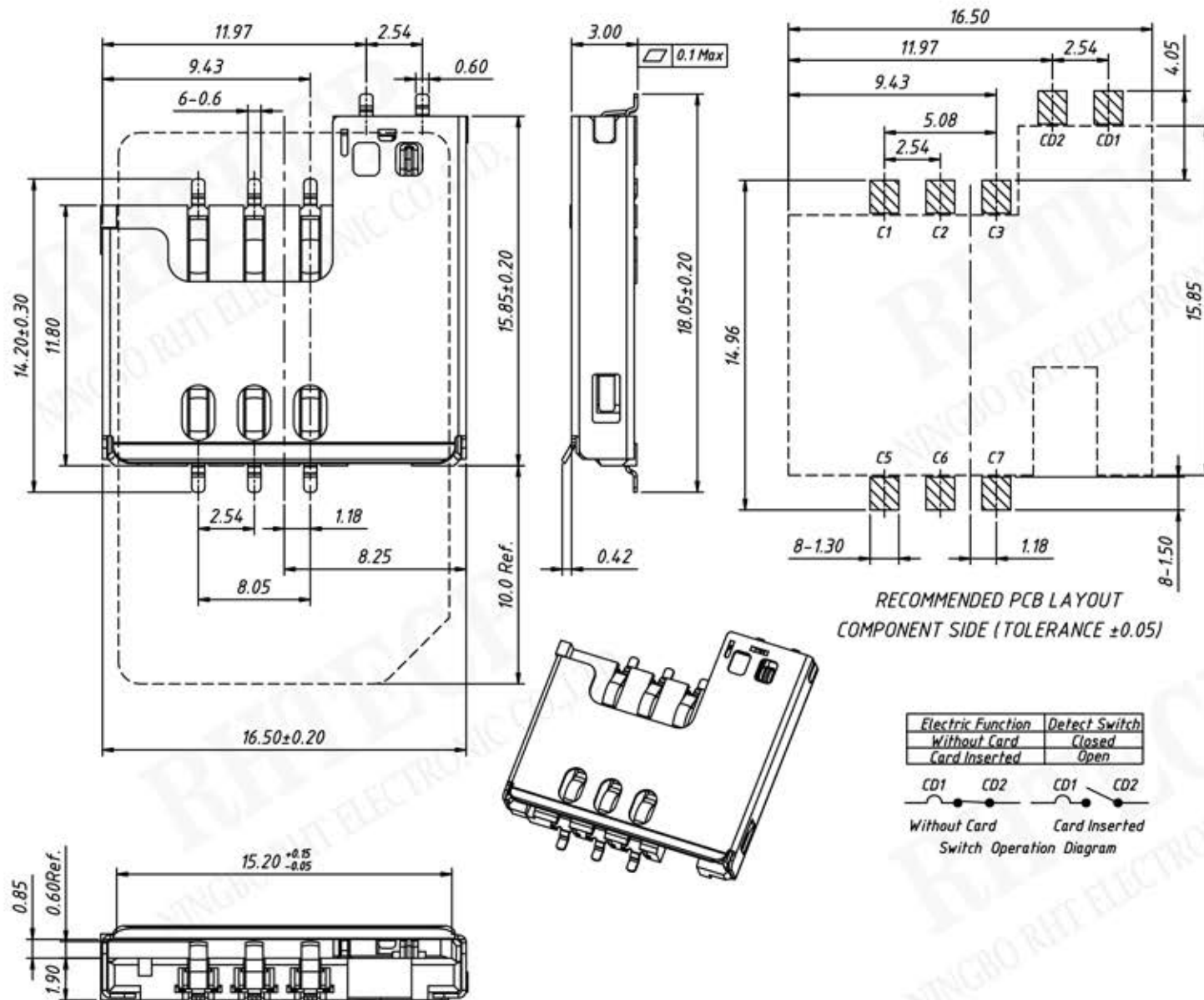


P/N: RE-C-SIM-C727-2



Material:
 Base:Hi Temp Thermoplastic,
 Black UL 94V-0
 Cover:Stainless Steel
 Data Contact:Copper Alloy,
 Gold plated
 Switch Contact 1:Copper Alloy,
 Gold plated
 Switch Contact 2:Copper Alloy,
 Gold plated

Technical Characteristics
 1.General Characteristics
 Dimensions:
 15.85L×16.50W×3.00H mm
 Weight:Approx 0.78±0.2g
 Durability:5000 cycles min.
 2.Electrical Characteristics
 Contact Resistance:50mΩ
 typical 100mΩ Max.
 Insulation Resistance:1000MΩ
 Min./500V DC
 3.Solderability
 IR reflow:260°C,10 sec.Max.
 Manual soldering:370°C,3 sec.Max.
 4.Environmental Characteristics
 Operating Temperature:-40°C
 TO +85°C.
 Operating Humidity:10%~95%RH