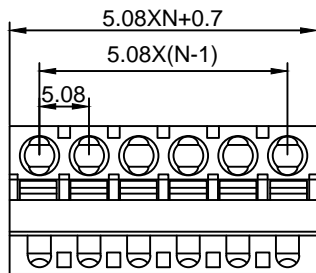


WURTH 691-353-500-004 aletrnative
BC2EGTKD-5.08-04P-14-00AH



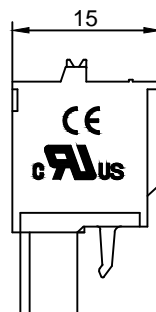
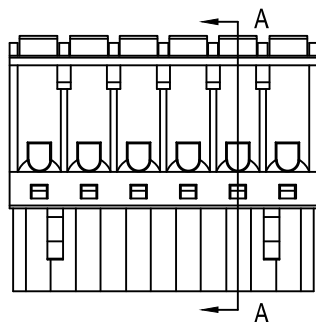
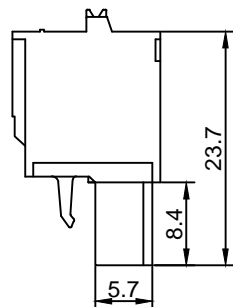
Material :

- (a) Housing : PA66(UL94V-0)
- (b) Button : POM(UL94HB)
- (c) Spring : Stainless Steel
- (d) Clamp : Phosphor Bornze
- (e) Cover : PA66(UL94V-0)

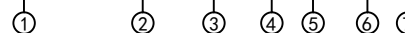
Electrical :

- 1. Rated Voltage : 300V
- 2. Rated Current : 10A
- 3. Wire Range: 26-12AWG
- 4. Stripping Length : 7-8mm
- 5. Withstanding Voltage : AC1600V/1Min.
- 6. Operating Temperature : -40 °C~+105°C
- 7. RoHS Compliance
- 8. Safty Approval :
- 9. Undimensioned Tolerances:

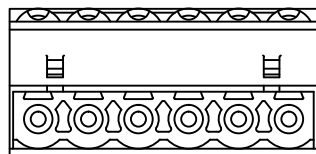
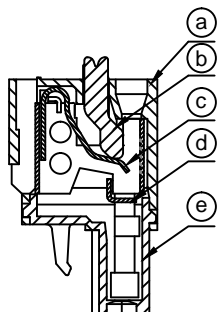
| Pitch Range In mm | | Nominal Dimension Range In mm | | | | | |
|-------------------|--------|-------------------------------|-------|---------|----------|-----------|-------|
| ≤6 | 6 ~ 10 | 10 ~ 24 | ≤30 | 30 ~ 60 | 60 ~ 100 | 100 ~ 150 | >150 |
| ±0.10 | ±0.15 | ±0.25 | ±0.20 | ±0.30 | ±0.50 | ±0.70 | ±1.00 |
| | | | | | | | ±0.1° |



BC2EGTKD - 5.08 -XXP - X X - XX AH



- ① Series NO.
- ② Pitch
- ③ Poles
- ④ 1 Single Pitch
2 Double Pitch
- ⑤ Color: 1 Grey
2 Blue
3 Black
4 Green(Standard For AH)
5 Orange
6 Red
7 Transparent
8 Yellow
9 White
- ⑥ Customer Request: 00--Standard
- ⑦ AH--Standard(PA66)



| | | | | |
|----------------------------|--------------------------|------------------------------------|-----------------------------------|-----------|
| DETACHED LISTS | BEC Distribution Limited | | WURTH 691-353-500-004 alternative | |
| | APPD: MA_8/13/16' | PART NO. BC2EGTKD-5.08-04P-14-00AH | | |
| | CHKD: Yu_8/12/16' | DRAWING NO. | | |
| | DRFT: Chen_8/11/16' | REV 1 | | |
| THIRD ANGLE PROJECTION | | MM (INCH) | | SHEET 1/1 |
| | | DO NOT SCALE DRAWING | | SCALE 1/1 |