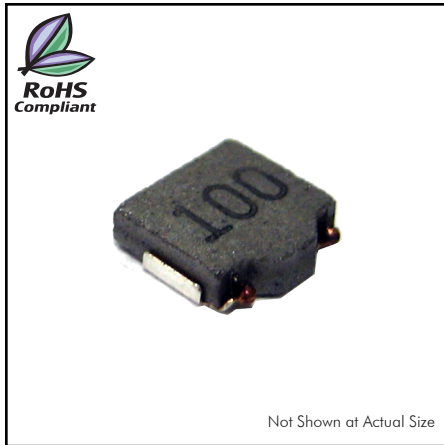


02-623F Series

From .47 μ H to 10 μ H



SPECIFICATIONS

Parts are available in $\pm 20\%$ inductance tolerance only

Part Number	Inductance (μ H)	L Test Condition	DCR Max. (m Ω)	Isat Max. (A)	Irms Max. (A)
02-623F-R47M	0.47	100KHz, 1V	11.3	12.0	8.3
02-623F-R68M	0.68	100KHz, 1V	13.8	8.6	7.7
02-623F-1R0M	1.00	100KHz, 1V	22.5	8.4	5.4
02-623F-1R5M	1.50	100KHz, 1V	30.0	6.1	4.8
02-623F-2R2M	2.20	100KHz, 1V	48.0	5.8	3.7
02-623F-3R3M	3.30	100KHz, 1V	82.5	4.1	2.8
02-623F-4R7M	4.70	100KHz, 1V	100.0	3.5	2.5
02-623F-6R8M	6.80	100KHz, 1V	125.5	2.8	2.2
02-623F-100M	10	100KHz, 1V	230.0	1.8	1.6

PHYSICAL DIMENSIONS

Size	A	B	C	D	E	F
			Max.	Max.		
mm	4.4 \pm 0.2	4.1 \pm 0.2	4.4	1.5	1.60	1.60
inches	0.17 \pm 0.008	0.16 \pm 0.008	0.17	0.059	0.063	0.063
Size	G	H	I	J	K	
mm	1.0	1.10 \pm 0.1	2.2	1.05 \pm 0.1	2.0	
inches	0.039	0.043 \pm 0.004	0.087	0.041 \pm 0.004	0.079	

CHARACTERISTICS

Description: SMD (shielded) Power Inductors

Applications: Smart phones, Notebook PC's, Tablets, HDD's, Servers, VRM's, Compact power supply modules, etc.

Saturation Rated Current (Isat): The DC current when the when the inductance becomes 30% lower than its initial value. (Ta=25°C)

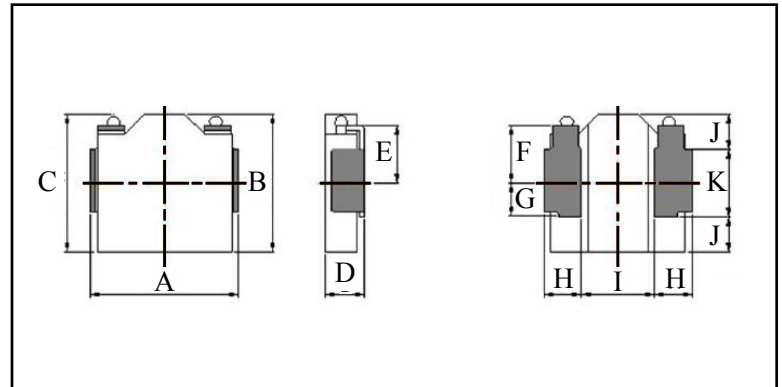
Temperature Rise Current (Irms): The actual current when temperature of coil becomes $\Delta T 40^\circ\text{C}$. (Ta=25°C)

Operating Temperature Range: -55°C to 155°C

Markings: Inductance Code

Miscellaneous: RoHS compliant

Samples available. See website for ordering information.



PAD LAYOUT

