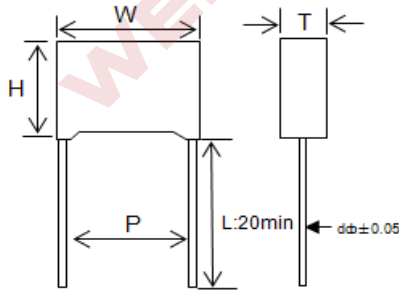


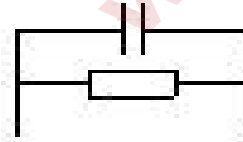
W63 MKPR series

金属化聚丙烯膜抗干扰电容器 (带放电电阻, X2 类)
 Metallized polypropylene film interference suppression capacitor(class X2)

外形图 Outline Drawing



电路结构图 Electrical Connection



特点

- X2 电容器与放电电阻内部并联组成
- 优异的阻燃性能
- 广泛用于电源跨线电路等抗干扰场合

Features

- Internal parallel connection from X2 cap to discharge resistor
- S Excellent active and passive flame resistant abilities
- Widely used in across-the-line, interference suppression circuit, etc.

技术要求 Specifications

电容器类别 class	X2 类		
气候类别/阻燃等级 Climatic Category/Passive Flammability Category	40/110/56/B		
工作温度范围 Operating temperature	-40℃~110℃		
额定电压 Rated Voltage	310VAC ,50/60Hz		
最大连续直流电压 Maximum continuous DC voltage	630Vdc		
电容量范围 Capacitance Range	0.22 ~ 10.0μF		
电容量偏差 Capacitance Tolerance	±10% (K), ±20% (M)		
耐电压 Voltage Proof	引线之间 Between Terminals:	4.3UR(DC) (5S)	
	极壳之间 Between Terminals To Case:	2 120Vac (1min)	
损耗角正切 Dissipation Factor	0.22μF ≤ CR ≤ 0.47μF	0.47μF < CR ≤ 1.0μF	1.0μF < CR ≤ 10μF
	≤25×10 ⁻⁴ (1kHz,20℃)	≤20×10 ⁻⁴ (1kHz,20℃)	≤30×10 ⁻⁴ (1kHz,20℃)
	≤20×10 ⁻⁴ (10kHz,20℃)	≤40×10 ⁻⁴ (10kHz,20℃)	————
放电电阻范围/偏差 Resistance range/Tolerance	470 kΩ ~ 20 MΩ , ±10%		

W63 MKPR series

产品代码说明 Part number system

■ 18 位产品代码说明如下：

The 18 digits part number is formed as follow:



W 6 3

第 1~3 位：型号代码

W63=MKPR

第 4~5 位：交流额定电压

Q3=310V

第 6~8 位：标称容量

举例：104 = 10×10^4 PF = 0.1 μ f

第 9 位：容量偏差

K=±10%, M=±20%

第 10 位：引线脚距

P=22mm S=27mm X=37mm

第 11 位：放电电阻阻值代码

第 12 位：引线加工和包装代码

L= 直脚 K= 引线成型

T= 弹带包装

第 13~18 位：内部特征码

Digit 1 to 3: Series code

W63=MKPR

Digit 4 to 5: AC rated voltage

Q3=310V

Digit 6 to 8: Rated capacitance

For example: 104 = 10×10^4 PF = 0.1 μ f

Digit 9: Capacitance tolerance

K=±10%, M=±20%

Digit 10: Pitch

P=22mm S=27mm X=37mm

Digit 11: Value code of the discharge resistor

Digit 12: Lead form and packaging code

L= straight lead K= Lead kinked

T= ammo-pack

Digit 13 to 18: Internal use

W63 MKPR series

■ 外形尺寸 Dimensions (mm)

310Vac						
Cn (μ F)	W max	H max	T max	P	d	Part number
0.22	26.5	16.0	7.0	22.0	0.8	W63Q3224-P#*****
0.33	26.5	17.0	8.5	22.0	0.8	W63Q3334-P#*****
0.47	26.5	18.5	10.0	22.0	0.8	W63Q3474-P#*****
0.68	26.5	20.0	11.0	22.0	0.8	W63Q3684-P#*****
1.0	26.5	22.0	12.0	22.0	0.8	W63Q3105-P#*****
0.47	32.0	18.0	9.0	27.0	0.8	W63Q3474-S#*****
0.68	32.0	20.0	11.0	27.0	0.8	W63Q3684-S#*****
1.0	32.0	22.0	13.0	27.0	0.8	W63Q3105-S#*****
1.5	32.0	22.0	13.0	27.0	0.8	W63Q3155-S#*****
2.2	32.0	28.0	14.0	27.0	0.8	W63Q3225-S#*****
3.3	32.0	33.0	18.0	27.0	0.8	W63Q3335-S#*****
4.7	32.0	37.0	22.0	27.0	0.8	W63Q3475-S#*****
1.5	41.0	22.0	11.0	37.0	1.0	W63Q3155-X#*****
2.2	41.0	24.0	13.0	37.0	1.0	W63Q3225-X#*****
3.3	42.0	28.0	14.0	37.0	1.0	W63Q3335-X#*****
4.7	41.0	32.0	17.0	37.0	1.0	W63Q3475-X#*****
6.8	41.0	37.0	22.0	37.0	1.0	W63Q3685-X#*****
10.0	41.0	41.0	26.0	37.0	1.0	W63Q3106-X#*****

备注：1. "-" 表示容量偏差。"- " = capacitance tolerance code, M= \pm 20%,K= \pm 10%

2. 第 12 位表示引线加工和包装代码，L= 直脚 straight lead K= 引线成型 Lead kinked T= 弹带包装 ammo-pack

3. 第 11 位 "# " 表示放电电阻阻值代码。Digit 11: "# " = Value code of the discharge resistor

阻值代码：

电阻值 R	470K Ω	680K Ω	820K Ω	1MK Ω	1.2MK Ω	1.5MK Ω	2.2MK Ω	3.3MK Ω	4.7MK Ω	6.8MK Ω	10MK Ω	20MK Ω
代码 code	A	B	C	D	E	F	H	L	N	P	S	T