



SDS3015D SERIES ~ Shielded SMD Power Inductors

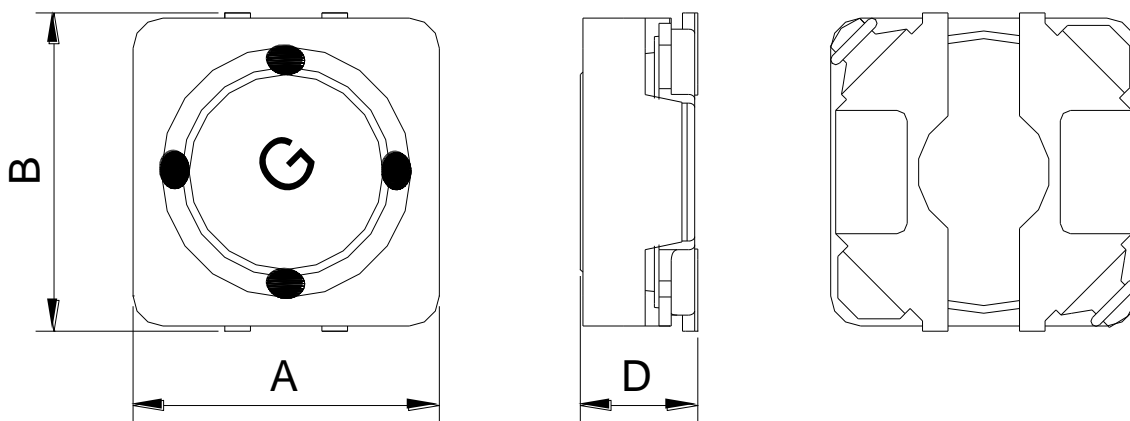


PART NUMBERING SYSTEM

SDS	3015D	—	4R7N	—	LF
TYPE	DIMENSIONS		INDUCTANCE		LEAD FREE

SHAPES AND DIMENSIONS

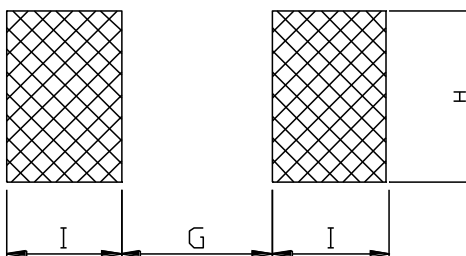
UNIT : mm



A=3.2 Max. B=3.5 Max. D=1.5 Max.

RECOMMENDED PATTERNS

UNIT : mm



G=0.6 H=3.3 I=1.3

SDS3015D SERIES ~ Shielded SMD Power Inductors



ELECTRICAL CHARACTERISTICS :

PART NUMBER	INDUCTANCE (μ H)	DCR (Ω) Max.(Typ.)	Isat (A) (Max.)	Irms (A) (Max.)	Stamp
SDS3015D-1R5N-LF	1.5 \pm 30%	84.0m(70m)	2.00	1.66	C
SDS3015D-1R8N-LF	1.8 \pm 30%	96.0m(80m)	1.70	1.56	D
SDS3015D-2R2N-LF	2.2 \pm 30%	108m(90m)	1.50	1.40	E
SDS3015D-2R7N-LF	2.7 \pm 30%	0.120(0.10)	1.40	1.30	F
SDS3015D-3R3N-LF	3.3 \pm 30%	0.132(0.11)	1.30	1.25	G
SDS3015D-3R9N-LF	3.9 \pm 30%	0.144(0.12)	1.20	1.20	H
SDS3015D-4R7M-LF	4.7 \pm 20%	0.192(0.16)	1.00	1.10	I
SDS3015D-5R6M-LF	5.6 \pm 20%	0.204(0.17)	0.90	1.05	J
SDS3015D-6R8M-LF	6.8 \pm 20%	0.276(0.23)	0.85	1.00	K
SDS3015D-8R2M-LF	8.2 \pm 20%	0.336(0.28)	0.80	0.95	L
SDS3015D-100M-LF	10 \pm 20%	0.432(0.36)	0.75	0.85	M
SDS3015D-120M-LF	12 \pm 20%	0.504(0.42)	0.62	0.77	N
SDS3015D-150M-LF	15 \pm 20%	0.600(0.50)	0.58	0.67	O
SDS3015D-180M-LF	18 \pm 20%	0.708(0.59)	0.54	0.56	P
SDS3015D-220M-LF	22 \pm 20%	0.864(0.72)	0.48	0.50	Q
SDS3015D-270M-LF	27 \pm 20%	0.984(0.82)	0.40	0.45	R

- Inductance tested at 100 kHz, 0.1 Vrms, 0 Adc using an Agilent/HP 4284B LCR meter or equivalent.
- Isat : DC current at which the inductance drops 30% (typ) from its value without current.
- Iirms: The actual current when temperature of coil becomes $\Delta 40^{\circ}\text{C}$. (Ta=+25 $^{\circ}\text{C}$)
- Operating temperature range -40 $^{\circ}\text{C}$ to +125 $^{\circ}\text{C}$, Electrical specifications at 25 $^{\circ}\text{C}$.