



SDC7D28MN SERIES~ SMD Shielded Power Inductors

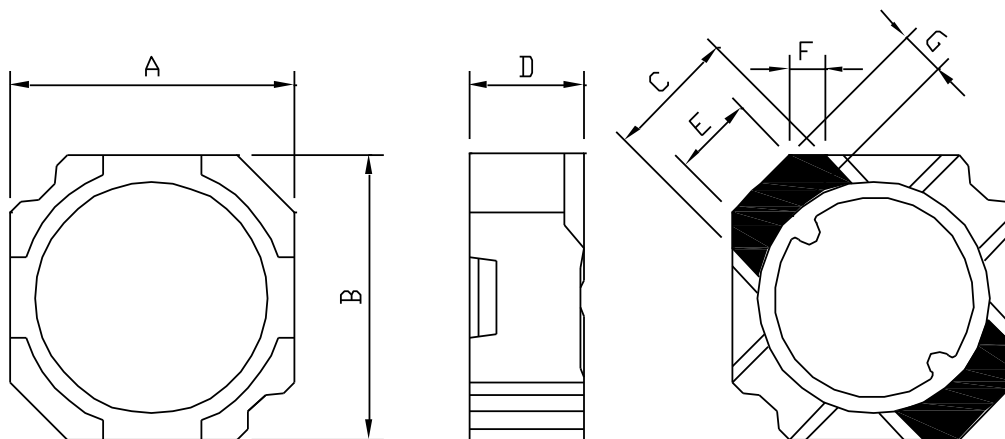


PART NUMBERING SYSTEM

SDC	7D28MN	—	6 R 8 N	—	LF
TYPE	DIMENSIONS		INDUCTANCE		LEAD FREE

SHAPES AND DIMENSIONS

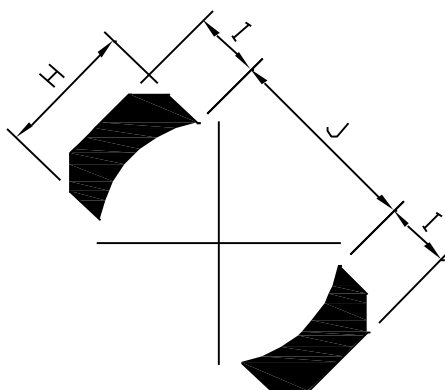
UNIT : mm



A=7.6 Max. B=7.6 Max. C=3.5 Ref. D=3.0 Max. E=1.7 Ref. F=1.3 Ref. G=1.3 Ref.

RECOMMENDED PATTERNS

UNIT : mm



H=4.0 Ref. I=2.7 Ref. J=4.2 Ref.

SDC7D28MN SERIES~ SMD Shielded Power Inductors



SPECIFICATION TABLE

PART NUMBER	INDUCTANCE (μ H)	DCR (m Ω) (Max.)	Isat (A)	Irms (A)	TEST FREQ. (f)
SDC7D28MN-1R2N-LF	3.0 \pm 30%	20.5	5.90	4.50	100KHz
SDC7D28MN-2R0N-LF	2.0 \pm 30%	23.8	4.55	3.95	100KHz
SDC7D28MN-2R7N-LF	2.7 \pm 30%	27.5	4.10	3.70	100KHz
SDC7D28MN-3R6N-LF	3.6 \pm 30%	32.5	3.55	3.45	100KHz
SDC7D28MN-4R6N-LF	4.6 \pm 30%	37.5	3.30	3.20	100KHz
SDC7D28MN-6R8N-LF	6.8 \pm 30%	46.3	2.90	2.75	100KHz
SDC7D28MN-8R0N-LF	8.0 \pm 30%	50.0	2.60	2.60	100KHz
SDC7D28MN-100P-LF	10 \pm 25%	53.8	2.40	2.50	100KHz
SDC7D28MN-150P-LF	15 \pm 25%	81.3	2.10	2.20	100KHz
SDC7D28MN-220P-LF	22 \pm 25%	120	1.65	1.60	100KHz
SDC7D28MN-330P-LF	33 \pm 25%	196	1.35	1.20	100KHz
SDC7D28MN-470P-LF	47 \pm 25%	275	1.05	1.00	100KHz
SDC7D28MN-680P-LF	68 \pm 25%	425	0.90	0.78	100KHz
SDC7D28MN-101P-LF	100 \pm 25%	655	0.75	0.65	100KHz
SDC7D28MN-151P-LF	120 \pm 25%	950	0.60	0.52	100KHz
SDC7D28MN-221P-LF	220 \pm 25%	1320	0.50	0.40	100KHz
SDC7D28MN-331P-LF	330 \pm 25%	2180	0.35	0.31	100KHz
SDC7D28MN-471P-LF	470 \pm 25%	2650	0.30	0.28	100KHz

- Isat : DC current at which the inductance drops 35% (typ) from its value without current.
- Irms: The actual current when temperature of coil becomes $\Delta 40^{\circ}\text{C}$. ($T_a = +25^{\circ}\text{C}$)
- Operating temperature range -40°C to $+125^{\circ}\text{C}$, Electrical specifications at 25°C .
- Packing : 13" reel, machine-ready, embossed plastic tape (1,000 parts per full reel).