



## SDC3D23HP SERIES~ SMD Shielded Power Inductors

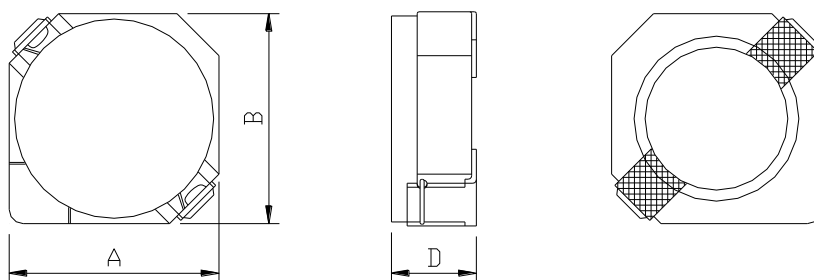


### PART NUMBERING SYSTEM

<b>SDC</b>	<b>3D23HP</b>	—	<b>2R7N</b>	—	<b>LF</b>
TYPE	DIMENSIONS		INDUCTANCE		LEAD FREE

### SHAPES AND DIMENSIONS

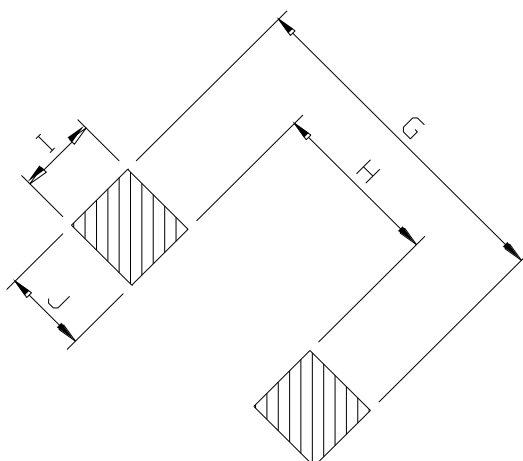
UNIT : mm



**A=4.00 max. B=4.00 max. D=2.5 max.**

### RECOMMENDED PATTERNS

UNIT : mm



**G= 5.2 H= 2.4 I = 1.5 J = 1.4**

## SDC3D23HP SERIES~ SMD Shielded Power Inductors



### SPECIFICATION TABLE

PART NUMBER	INDUCTANCE ( $\mu$ H)	DCR (m $\Omega$ ) (Max.)	Isat (A) ( Max. )	Irms (A) ( Max. )	TEST FREQ. ( f )
SDC3D23HP-1R2N-LF	1.2 $\pm$ 30%	40.4	3.52	2.55	100KHz/1V
SDC3D23HP-2R2N-LF	2.2 $\pm$ 30%	50.3	2.60	2.25	100KHz/1V
SDC3D23HP-2R7N-LF	2.7 $\pm$ 30%	62.3	2.40	2.00	100KHz/1V
SDC3D23HP-3R3N-LF	3.3 $\pm$ 30%	70.0	2.20	1.85	100KHz/1V
SDC3D23HP-4R7N-LF	4.7 $\pm$ 30%	95.5	1.84	1.60	100KHz/1V
SDC3D23HP-5R6N-LF	5.6 $\pm$ 30%	102	1.66	1.50	100KHz/1V
SDC3D23HP-6R8N-LF	6.8 $\pm$ 30%	136	1.52	1.30	100KHz/1V
SDC3D23HP-8R2N-LF	8.2 $\pm$ 30%	145	1.36	1.25	100KHz/1V
SDC3D23HP-100M-LF	10 $\pm$ 20%	198	1.28	1.02	100KHz/1V
SDC3D23HP-120M-LF	12 $\pm$ 20%	249	1.14	0.95	100KHz/1V
SDC3D23HP-150M-LF	15 $\pm$ 20%	276	1.02	0.90	100KHz/1V
SDC3D23HP-220M-LF	22 $\pm$ 20%	383	0.80	0.70	100KHz/1V
SDC3D23HP-330M-LF	33 $\pm$ 20%	555	0.68	0.58	100KHz/1V
SDC3D23HP-470M-LF	47 $\pm$ 20%	669	0.56	0.53	100KHz/1V

- Isat : DC current at which the inductance drops 35% (typ) from its value without current.
- Irms: The actual current when temperature of coil becomes  $\Delta 40^{\circ}\text{C}$  . (  $T_a=+25^{\circ}\text{C}$  )
- Operating temperature range  $-40^{\circ}\text{C}$  to  $+125^{\circ}\text{C}$  , Electrical specifications at  $25^{\circ}\text{C}$ .
- Packing : 13" reel, machine-ready ,embossed plastic tape ( 2,000 parts per full reel)..