



## SDC3D23 SERIES~ SMD Shielded Power Inductors

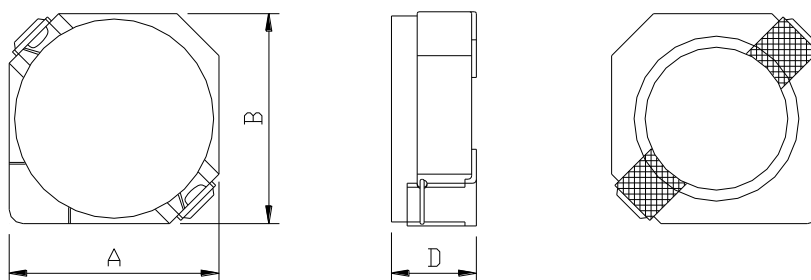


### PART NUMBERING SYSTEM

<b>SDC</b>	<b>3D23</b>	—	<b>2R2N</b>	—	<b>LF</b>
TYPE	DIMENSIONS		INDUCTANCE		LEAD FREE

### SHAPES AND DIMENSIONS

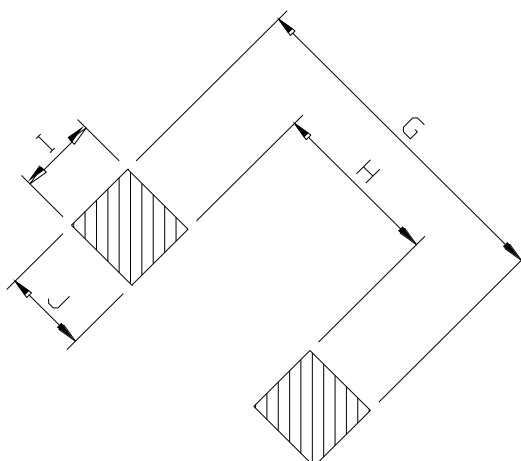
UNIT : mm



**A=4.00 max. B=4.00 max. D=2.5 max.**

### RECOMMENDED PATTERNS

UNIT : mm



**G= 5.2 H= 2.4 I = 1.5 J = 1.4**

## SDC3D23 SERIES~ SMD Shielded Power Inductors



### SPECIFICATION TABLE

PART NUMBER	INDUCTANCE ( $\mu$ H)	DCR (m $\Omega$ ) (Max.)	Isat (A) ( Max. )	Irms (A) ( Max. )	TEST FREQ. ( f )
SDC3D23-1R0N-LF	1.0 $\pm$ 30%	25.0	2.80	3.10	100KHz/1V
SDC3D23-1R5N-LF	1.5 $\pm$ 30%	29.0	2.20	2.90	100KHz/1V
SDC3D23-2R2N-LF	2.2 $\pm$ 30%	38.3	1.80	2.50	100KHz/1V
SDC3D23-3R3N-LF	3.3 $\pm$ 30%	56.3	1.45	2.20	100KHz/1V
SDC3D23-4R7N-LF	4.7 $\pm$ 30%	68.8	1.30	1.90	100KHz/1V
SDC3D23-5R6N-LF	5.6 $\pm$ 30%	75.0	1.10	1.80	100KHz/1V
SDC3D23-6R8N-LF	6.8 $\pm$ 30%	87.8	1.00	1.70	100KHz/1V
SDC3D23-8R2N-LF	8.2 $\pm$ 30%	94.8	0.95	1.60	100KHz/1V
SDC3D23-100M-LF	10 $\pm$ 20%	117	0.85	1.40	100KHz/1V
SDC3D23-150M-LF	15 $\pm$ 20%	191	0.70	0.85	100KHz/1V
SDC3D23-220M-LF	22 $\pm$ 20%	270	0.55	0.75	100KHz/1V
SDC3D23-330M-LF	33 $\pm$ 20%	381	0.50	0.60	100KHz/1V
SDC3D23-470M-LF	47 $\pm$ 20%	546	0.35	0.55	100KHz/1V

- Isat : DC current at which the inductance drops 35% (typ) from its value without current.
- Iirms: The actual current when temperature of coil becomes  $\Delta 40^{\circ}\text{C}$  . (  $T_a=+25^{\circ}\text{C}$  )
- Operating temperature range  $-40^{\circ}\text{C}$  to  $+125^{\circ}\text{C}$  , Electrical specifications at  $25^{\circ}\text{C}$ .
- Packing : 13" reel, machine-ready ,embossed plastic tape ( 2,000 parts per full reel)..