



# SDC3D16LD SERIES

## Low Profile Shielded Power Inductors



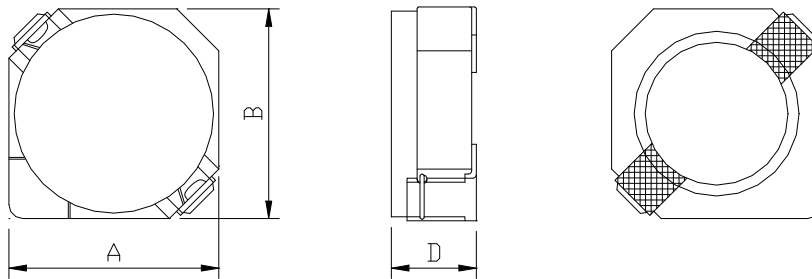
RoHS Compliant

### PART NUMBERING SYSTEM

<u>SDC</u>	<u>3D16LD</u>	—	<u>3R3N</u>	—	<u>LF</u>
TYPE	DIMENSIONS		INDUCTANCE		LEAD FREE

### SHAPES AND DIMENSIONS

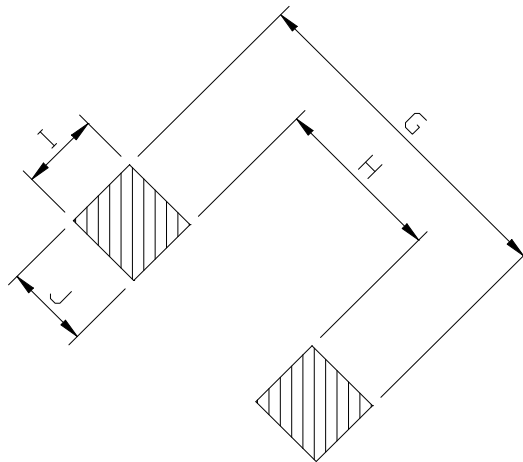
UNIT : mm



**A=4.00 max. B=4.00 max. D=1.8 max.**

### RECOMMENDED PATTERNS

UNIT : mm



**G= 5.2 H= 2.4 I = 1.5 J = 1.4**



## SDC3D16LD SERIES

### Low Profile Shielded Power Inductors



RoHS Compliant

#### SPECIFICATION TABLE

PART NUMBER	INDUCTANCE ( $\mu$ H)	DCR (m $\Omega$ ) (Max.)	Isat (A) ( Max. )	Irms (A) ( Max. )	TEST FREQ. ( f )
SDC3D16LD-3R3N-LF	3.3 $\pm$ 30%	66	0.80	2.00	100KHz
SDC3D16LD-3N9N-LF	3.9 $\pm$ 30%	81	0.75	1.75	100KHz
SDC3D16LD-4R7N-LF	4.7 $\pm$ 30%	91	0.68	1.72	100KHz
SDC3D16LD-5N6N-LF	5.6 $\pm$ 30%	102	0.62	1.64	100KHz
SDC3D16LD-6N8N-LF	6.8 $\pm$ 30%	130	0.58	1.30	100KHz
SDC3D16LD-8N2N-LF	8.2 $\pm$ 30%	140	0.51	1.28	100KHz
SDC3D16LD-100N-LF	10 $\pm$ 30%	190	0.46	1.07	100KHz
SDC3D16LD-120N-LF	12 $\pm$ 30%	205	0.42	0.98	100KHz
SDC3D16LD-150N-LF	15 $\pm$ 30%	272	0.38	0.87	100KHz
SDC3D16LD-180N-LF	18 $\pm$ 30%	327	0.34	0.76	100KHz
SDC3D16LD-220N-LF	22 $\pm$ 30%	356	0.31	0.66	100KHz
SDC3D16LD-270N-LF	27 $\pm$ 30%	470	0.28	0.60	100KHz
SDC3D16LD-330N-LF	33 $\pm$ 30%	560	0.26	0.55	100KHz
SDC3D16LD-390N-LF	39 $\pm$ 30%	700	0.24	0.47	100KHz
SDC3D16LD-470N-LF	47 $\pm$ 30%	775	0.21	0.45	100KHz

- Isat : DC current at which the inductance drops 35% (typ) from its value without current.
- Irms: The actual current when temperature of coil becomes  $\Delta 40^{\circ}\text{C}$  . ( Ta=+25 $^{\circ}\text{C}$  )
- Operating temperature range -40 $^{\circ}\text{C}$  to +125 $^{\circ}\text{C}$  , Electrical specifications at 25 $^{\circ}\text{C}$ .
- Packing : 13" reel, machine-ready ,embossed plastic tape ( 2,000 parts per full reel).



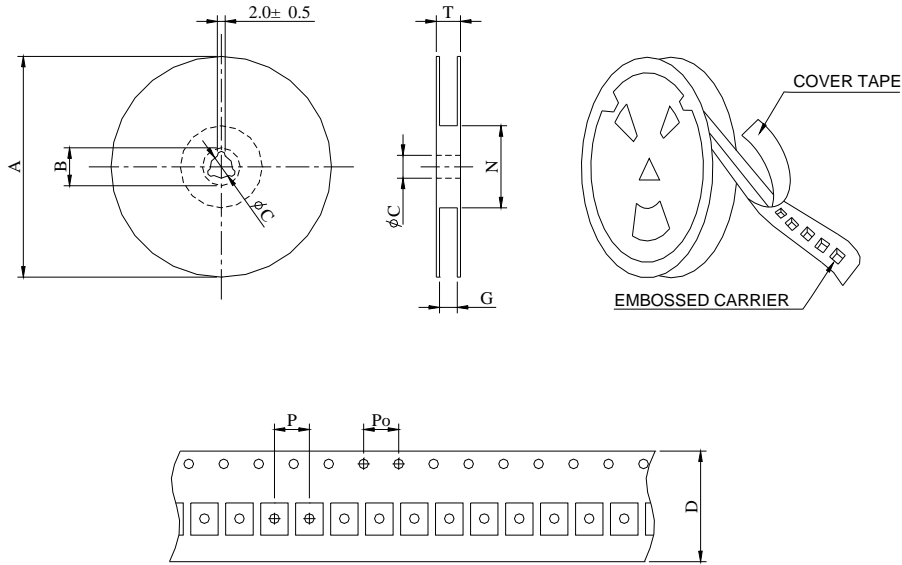
# SDC3D16LD SERIES

## Low Profile Shielded Power Inductors



RoHS Compliant

### PACKAGING SPECIFICATION



SERIES	STAYLE	Q' TY (PCS)	DIMENSIONS (m/m)								
			A	B±0.8	C±0.5	D	G <sup>+0</sup>	N <sup>-0</sup>	P	Po	T
SDC3D16LD	13-16	2000	330	21	13	16	18	50	8	4	22.4