



SDC3D16 SERIES~ SMD Shielded Power Inductors

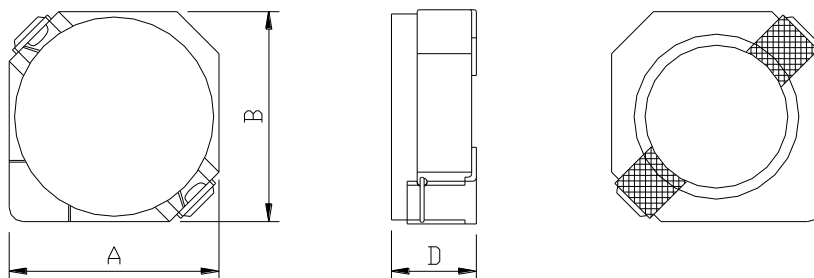


PART NUMBERING SYSTEM

SDC	3D16	—	100N	—	LF
TYPE	DIMENSIONS		INDUCTANCE		LEAD FREE

SHAPES AND DIMENSIONS

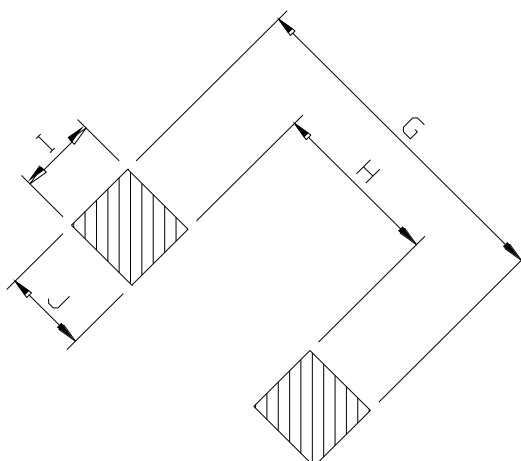
UNIT : mm



A=4.00 max. B=4.00 max. D=1.8 max.

RECOMMENDED PATTERNS

UNIT : mm



G= 5.2 H= 2.4 I = 1.5 J = 1.4

SDC3D16 SERIES~ SMD Shielded Power Inductors

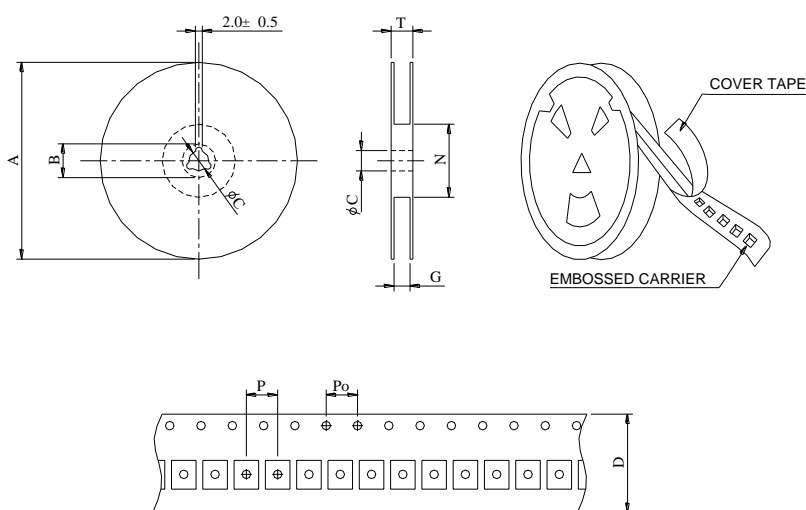


SPECIFICATION TABLE

PART NUMBER	INDUCTANCE (μ H)	DCR (m Ω) (Max.)	Isat (A) (Max.)	Irms (A) (Max.)	TEST FREQ. (f)
SDC3D16-1R5N-LF	1.5 \pm 30%	52	1.55	1.55	100KHz
SDC3D16-2R2N-LF	2.2 \pm 30%	72	1.20	1.20	100KHz
SDC3D16-3R3N-LF	3.3 \pm 30%	85	1.10	1.10	100KHz
SDC3D16-4R7N-LF	4.7 \pm 30%	105	0.90	0.90	100KHz
SDC3D16-6R8N-LF	6.8 \pm 30%	170	0.73	0.73	100KHz
SDC3D16-100N-LF	10 \pm 30%	210	0.55	0.55	100KHz
SDC3D16-150N-LF	15 \pm 30%	295	0.45	0.45	100KHz
SDC3D16-220N-LF	22 \pm 30%	430	0.40	0.40	100KHz
SDC3D16-330N-LF	33 \pm 30%	675	0.32	0.32	100KHz

- Isat : DC current at which the inductance drops 35% (typ) from its value without current.
- Irms: The actual current when temperature of coil becomes $\Delta 40^{\circ}\text{C}$. (Ta= $+25^{\circ}\text{C}$)
- Operating temperature range -40°C to $+125^{\circ}\text{C}$, Electrical specifications at 25°C .

PACKAGING SPECIFICATION



SERIES	STAYLE	Q'TY (PCS)	DIMENSIONS (m/m)								
			A	B ± 0.8	C ± 0.5	D	G ⁺⁰	N ⁻⁰	P	Po	T
SDC3D16	13-16	2000	330	21	13	16	18	50	8	4	22.4