



## SDC3D11 SERIES

### Low Profile Shielded Power Inductors

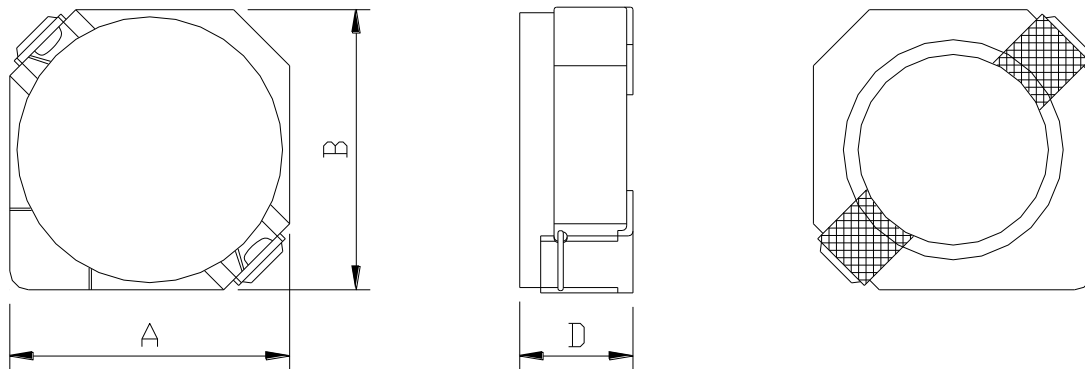


#### PART NUMBERING SYSTEM

|            |             |   |             |   |           |
|------------|-------------|---|-------------|---|-----------|
| <b>SDC</b> | <b>3D11</b> | — | <b>150N</b> | — | <b>LF</b> |
| TYPE       | DIMENSIONS  |   | INDUCTANCE  |   | LEAD FREE |

#### SHAPES AND DIMENSIONS

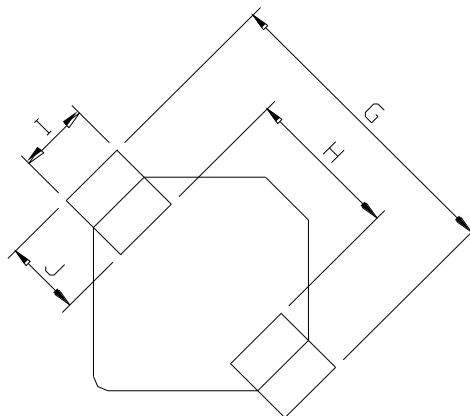
UNIT : mm



A=4.0 max. B=4.0 max. D=1.2 max.

#### RECOMMENDED PATTERNS

UNIT : mm



G= 5.2 H= 2.4 I = 1.5 J = 1.4



## SDC3D11 SERIES

### Low Profile Shielded Power Inductors



#### ELECTRICAL CHARACTERISTICS :

| PART NUMBER     | INDUCTANCE<br>( $\mu$ H) | DCR (m $\Omega$ )<br>(Max.) | Isat (A)<br>( Max. ) | Irms (A)<br>( Max. ) | TEST FREQ.<br>( f ) |
|-----------------|--------------------------|-----------------------------|----------------------|----------------------|---------------------|
| SDC3D11-2R7N-LF | 2.7 $\pm$ 30%            | 65                          | 0.53                 | 1.82                 | 100KHz              |
| SDC3D11-4R7N-LF | 4.7 $\pm$ 30%            | 95                          | 0.40                 | 1.38                 | 100KHz              |
| SDC3D11-6R8N-LF | 6.8 $\pm$ 30%            | 150                         | 0.34                 | 1.05                 | 100KHz              |
| SDC3D11-8R2N-LF | 8.2 $\pm$ 30%            | 190                         | 0.32                 | 0.93                 | 100KHz              |
| SDC3D11-100N-LF | 10 $\pm$ 30%             | 200                         | 0.28                 | 0.90                 | 100KHz              |
| SDC3D11-120N-LF | 12 $\pm$ 30%             | 230                         | 0.25                 | 0.81                 | 100KHz              |
| SDC3D11-150N-LF | 15 $\pm$ 30%             | 320                         | 0.23                 | 0.68                 | 100KHz              |
| SDC3D11-180N-LF | 18 $\pm$ 30%             | 400                         | 0.21                 | 0.58                 | 100KHz              |
| SDC3D11-220N-LF | 22 $\pm$ 30%             | 450                         | 0.19                 | 0.53                 | 100KHz              |
| SDC3D11-270N-LF | 27 $\pm$ 30%             | 650                         | 0.17                 | 0.48                 | 100KHz              |
| SDC3D11-330N-LF | 33 $\pm$ 30%             | 700                         | 0.15                 | 0.41                 | 100KHz              |
| SDC3D11-390N-LF | 39 $\pm$ 30%             | 850                         | 0.14                 | 0.40                 | 100KHz              |

- Isat : DC current at which the inductance drops 35% (typ) from its value without current.
- Irms: The actual current when temperature of coil becomes  $\Delta 40^{\circ}\text{C}$  . ( Ta=+25 $^{\circ}\text{C}$  )
- Operating temperature range -40 $^{\circ}\text{C}$  to +125 $^{\circ}\text{C}$  , Electrical specifications at 25 $^{\circ}\text{C}$ .
- Packing : 13" reel, machine-ready ,embossed plastic tape ( 2,000 parts per full reel).