



SDC2D18LD SERIES ~ Low DCR Power Inductors

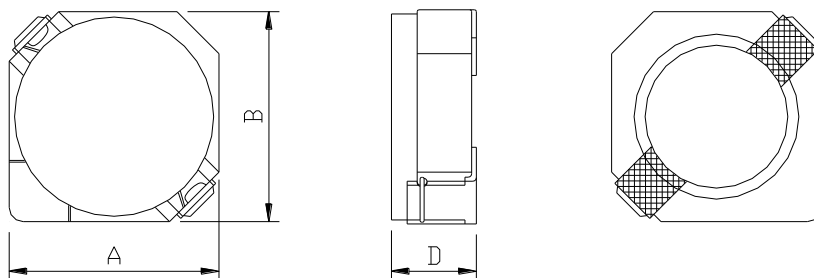


PART NUMBERING SYSTEM

SDC	2D18LD	—	100N	—	LF
TYPE	DIMENSIONS		INDUCTANCE		LEAD FREE

SHAPES AND DIMENSIONS

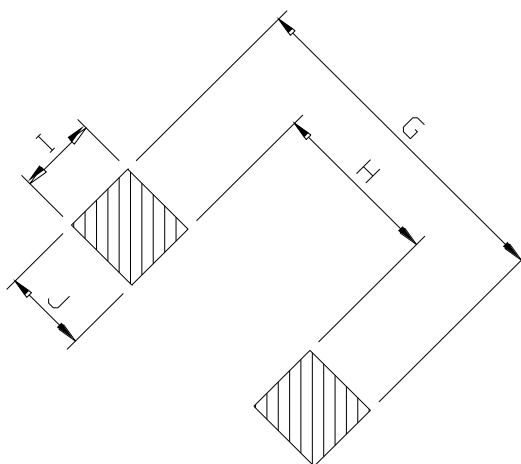
UNIT : mm



A=3.20 max. B=3.20 max. D=2.0 max.

RECOMMENDED PATTERNS

UNIT : mm



G= 4.3 H= 1.7 I = 1.3 J = 1.3



SDC2D18LD SERIES ~ Low DCR Power Inductors



ELECTRICAL CHARACTERISTICS :

PART NUMBER	INDUCTANCE (μ H)	DCR (m Ω) (Max.)	Isat (A) (Max.)	Irms (A) (Max.)	TEST FREQ. (f)
SDC2D18LD-2R2N-LF	2.2 \pm 30%	41	0.85	2.30	100KHz
SDC2D18LD-3R3N-LF	3.3 \pm 30%	54	0.75	2.10	100KHz
SDC2D18LD-4R7N-LF	4.7 \pm 30%	78	0.63	1.65	100KHz
SDC2D18LD-6R8N-LF	6.8 \pm 30%	106	0.52	1.32	100KHz
SDC2D18LD-100N-LF	10 \pm 30%	180	0.43	1.00	100KHz
SDC2D18LD-150N-LF	15 \pm 30%	220	0.35	0.80	100KHz
SDC2D18LD-220N-LF	22 \pm 30%	320	0.30	0.68	100KHz
SDC2D18LD-330N-LF	33 \pm 30%	460	0.24	0.56	100KHz
SDC2D18LD-470N-LF	47 \pm 30%	660	0.20	0.48	100KHz

- Isat : DC current at which the inductance drops 35% (typ) from its value without current.
- Irms: The actual current when temperature of coil becomes $\Delta 40^{\circ}\text{C}$. (Ta= $+25^{\circ}\text{C}$)
- Operating temperature range -40°C to $+125^{\circ}\text{C}$, Electrical specifications at 25°C .
- Packing : 13" reel, machine-ready ,embossed plastic tape (3,500 parts per full reel).
- PLATING / SOLDER : TIN-SILVER-COPPER (95.5%/4.0%/0.5%)