



SDC2D11HP SERIES

Low Profile Shielded Power Inductors

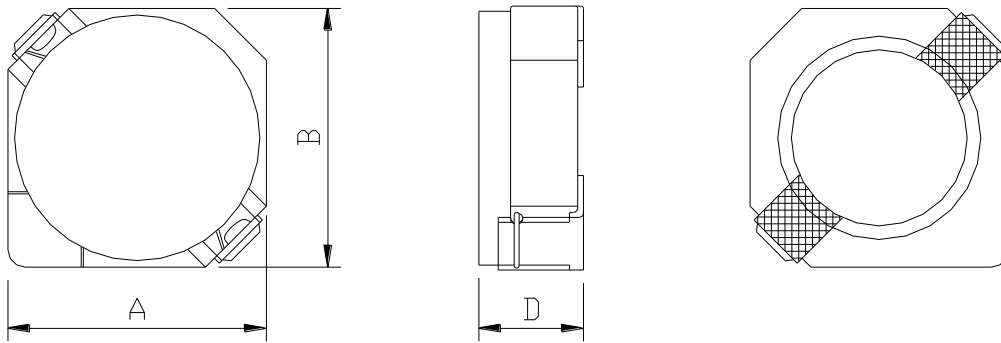


PART NUMBERING SYSTEM

SDC	2D11HP	—	4R7N	—	LF
TYPE	DIMENSIONS		INDUCTANCE		LEAD FREE

SHAPES AND DIMENSIONS

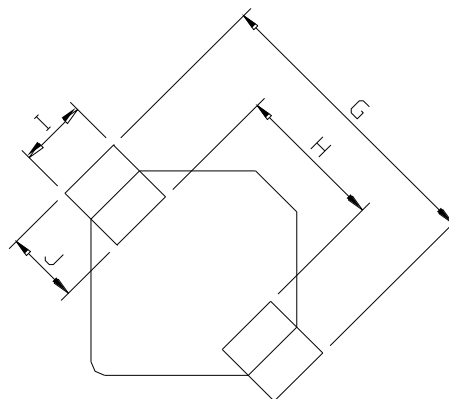
UNIT : mm



A=3.20 max. B=3.20 max. D=1.2 max.

RECOMMENDED PATTERNS

UNIT : mm



G= 4.3 H= 1.7 I= 1.3 J= 1.3



SDC2D11HP SERIES

Low Profile Shielded Power Inductors



ELECTRICAL CHARACTERISTICS :

PART NUMBER	INDUCTANCE (μ H)	DCR (m Ω) (Max.)	Isat (A) (Max.)	Irms (A) (Max.)	Stamp
SDC2D11HP-1R5N-LF	1.5 \pm 30%	80	1.35	1.60	A
SDC2D11HP-2R2N-LF	2.2 \pm 30%	120	1.10	1.30	B
SDC2D11HP-3R3N-LF	3.3 \pm 30%	135	0.90	0.98	C
SDC2D11HP-4R7N-LF	4.7 \pm 30%	238	0.75	0.85	D
SDC2D11HP-6R8N-LF	6.8 \pm 30%	371	0.63	0.65	E
SDC2D11HP-100N-LF	10 \pm 30%	559	0.52	0.52	F

- Inductance tested at 100 kHz, 1 Vrms, 0 Adc using an Agilent/HP 4263B LCR meter or equivalent.
- Isat : DC current at which the inductance drops 35% (typ) from its value without current.
- Irms: The actual current when temperature of coil becomes $\Delta 40^{\circ}\text{C}$. (Ta=+25 $^{\circ}\text{C}$)
- Operating temperature range -40 $^{\circ}\text{C}$ to +125 $^{\circ}\text{C}$, Electrical specifications at 25 $^{\circ}\text{C}$.
- Packing : 13" reel, machine-ready ,embossed plastic tape (3,500 parts per full reel).