



SDC2D11 SERIES

Low Profile Shielded Power Inductors

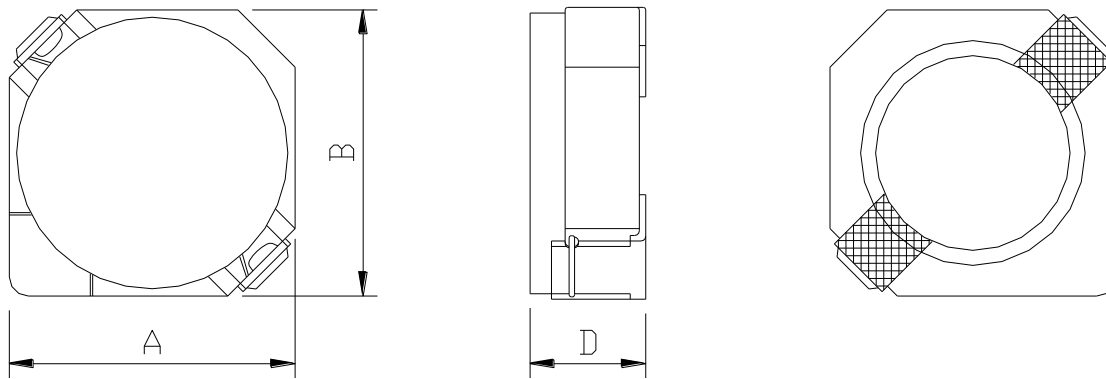


PART NUMBERING SYSTEM

SDC	2D11	—	2R2N	—	LF
TYPE	DIMENSIONS		INDUCTANCE		LEAD FREE

SHAPES AND DIMENSIONS

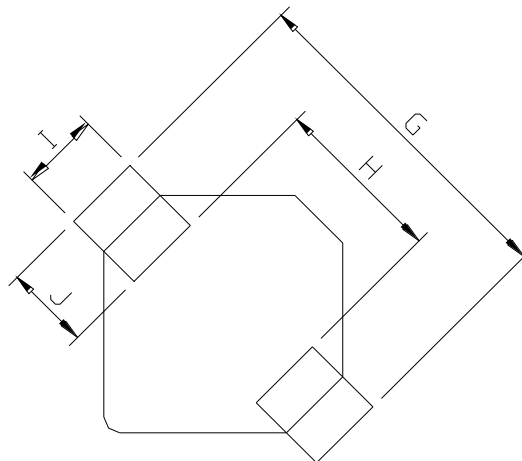
UNIT : mm



A=3.20 max. B=3.20 max. D=1.2 max.

RECOMMENDED PATTERNS

UNIT : mm



G= 4.3 H= 1.7 I = 1.3 J = 1.3



SDC2D11 SERIES

Low Profile Shielded Power Inductors



ELECTRICAL CHARACTERISTICS :

PART NUMBER	INDUCTANCE (μ H)	DCR (m Ω) (Max.)	Isat (A) (Max.)	Irms (A) (Max.)	Stamp
SDC2D11-1R5N-LF	1.5 \pm 30%	68	0.90	1.48	A
SDC2D11-2R2N-LF	2.2 \pm 30%	98	0.78	1.27	B
SDC2D11-3R3N-LF	3.3 \pm 30%	123	0.60	1.02	C
SDC2D11-4R7N-LF	4.7 \pm 30%	170	0.50	0.88	D
SDC2D11-6R8N-LF	6.8 \pm 30%	260	0.44	0.80	E
SDC2D11-100N-LF	10 \pm 30%	400	0.35	0.65	F

- Inductance tested at 100 kHz, 1 Vrms, 0 Adc using an Agilent/HP 4263B LCR meter or equivalent.
- Isat : DC current at which the inductance drops 35% (typ) from its value without current.
- Irms: The actual current when temperature of coil becomes $\Delta 40^{\circ}\text{C}$. (Ta=+25 $^{\circ}\text{C}$)
- Operating temperature range -40 $^{\circ}\text{C}$ to +125 $^{\circ}\text{C}$, Electrical specifications at 25 $^{\circ}\text{C}$.
- Packing : 13" reel, machine-ready ,embossed plastic tape (3,500 parts per full reel).