

## SBS6045 SERIES ~ Shielded SMD Power Inductors

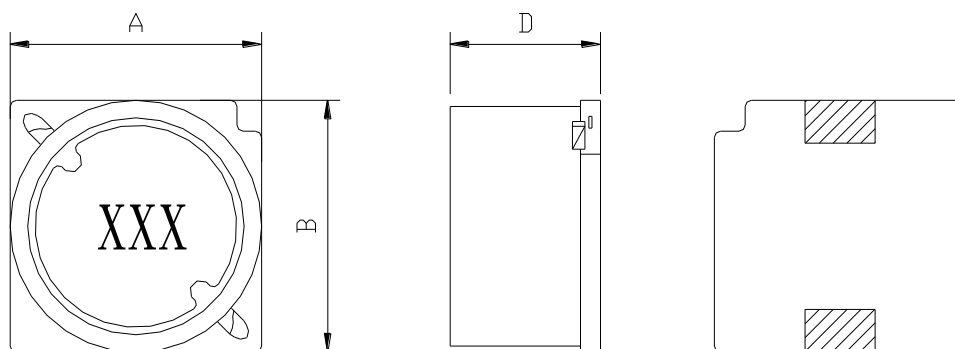


### PART NUMBERING SYSTEM

<b>SBS</b>	<b>6045</b>	<b>100M</b>	<b>LF</b>
TYPE	DIMENSIONS	INDUCTANCE	LEAD FREE

### SHAPES AND DIMENSIONS

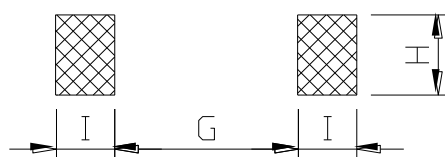
UNIT : mm



A=6.2 Max. B=6.2 Max. D=4.8 Max.

### RECOMMENDED PATTERNS

UNIT : mm



G=4.0 H=2.2 I=1.5

### FEATURES

- Low profile ( 6.2mm Max. square , 4.8mm Max. height )
- Magnetically shielded construction
- Suitable for large current
- Ideal for a variety of DC-DC converter inductor applications .
- RoHS compliant .

## SBS6045 SERIES ~ Shielded SMD Power Inductors

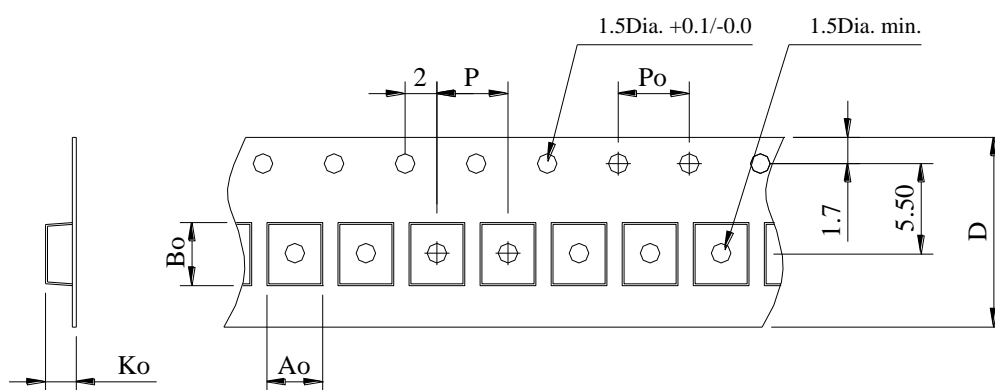


### SPECIFICATION TABLE

PART NUMBER	INDUCTANCE ( $\mu$ H)	DCR (m $\Omega$ ) (Max.)	Isat (A) ( Max. )	Irms (A) ( Max. )	TEST FREQ. ( f )
SBS6045-1R5M-LF	1.5 $\pm$ 20%	20.80	4.0	4.1	100KHz
SBS6045-2R2M-LF	2.2 $\pm$ 20%	23.40	3.3	3.8	100KHz
SBS6045-3R3M-LF	3.3 $\pm$ 20%	27.95	2.8	3.4	100KHz
SBS6045-4R7M-LF	4.7 $\pm$ 20%	34.45	2.4	3.2	100KHz
SBS6045-6R8M-LF	6.8 $\pm$ 20%	42.90	2.0	2.8	100KHz
SBS6045-100M-LF	10.0 $\pm$ 20%	46.80	1.6	2.7	100KHz
SBS6045-150M-LF	15.0 $\pm$ 20%	71.40	1.3	2.4	100KHz
SBS6045-220M-LF	22.0 $\pm$ 20%	98.40	1.1	1.8	100KHz

- Isat : DC current at which the inductance drops 10% (typ) from its value without current.
- Irms: The actual current when temperature of coil becomes  $\Delta 40^{\circ}\text{C}$ . (  $T_a=+25^{\circ}\text{C}$  )
- Operating temperature range  $-40^{\circ}\text{C}$  to  $+125^{\circ}\text{C}$  ,
- Electrical specifications at  $25^{\circ}\text{C}$ .

### PACKAGING SPECIFICATION



STAYLE	Q'TY (PCS)	DIMENSIONS (m/m)					
		Ao	Bo	Ko	P	Po	D $\pm$ 0.3
13"	1,000	6.50	6.50	3.50	8.00	4.00	12.0