



# EMI SUPPRESSION CORES ~ SH SERIES



## APPLICATION

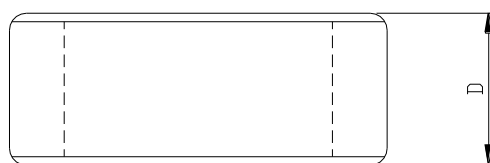
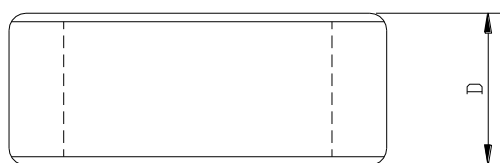
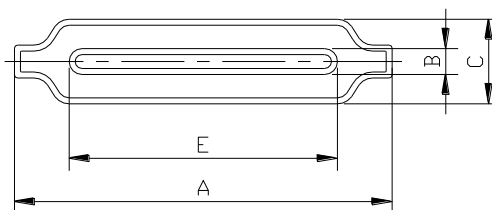
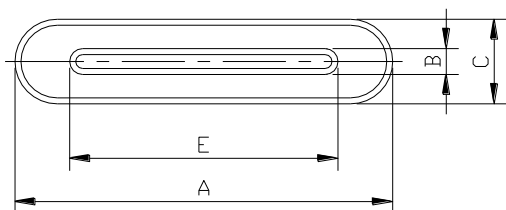
- Flat Cables
- Ribbon Wires
- Tape Wires

## PART NUMBERING SYSTEM

<b>C4S</b>	<b>SH</b>	<b>25×12×5</b>	<b>LF</b>
MATERIAL	TYPE & SIZES	CASE COLOR	LEAD FREE

## SHAPES AND DIMENSIONS

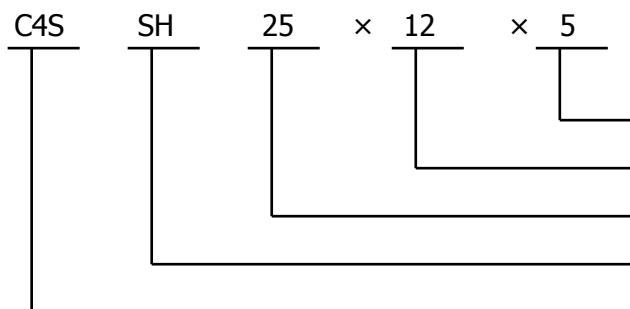
UNIT : mm



Orde

FIG1

FIG2



- C DIM.
- D DIM.
- A DIM.
- Core type
- Material

**Material : C4S**

## EMI SUPPRESSION CORES ~ SH SERIES



### Dimensions

Ordering code	Dimension in m/m					Typical Impedance (ohm) typ.		Fig
	A	B	C	D	E	25MHz	100MHz	
C4S SH 23.3×7×3-LF	23.3±0.5	0.90±0.3	3.0 <sup>+0.4</sup> <sub>-0.2</sub>	7.0±0.3	20.0±0.5	15	30	1
C4SSH 23.3×12×3-LF	23.3±0.5	0.90±0.3	3.0 <sup>+0.4</sup> <sub>-0.2</sub>	12.0±0.4	20.0±0.5	30	60	1
C4S SH 24.5×12×5-LF	24.5±0.5	0.80±0.3	5.0±0.5	12.0±0.4	20.0±0.5	30	90	1
C4S SH 25×12×5-LF	25.0±0.5	0.80±0.3	5.0±0.5	12.0±0.4	21.35±0.5	35	100	1
C4S SH 26×15×5-LF	26.0±0.6	0.80±0.3	5.0±0.5	15.0±0.5	20.0±0.5	40	110	1
C4S SH 28×14.6×7.7-LF	28.0±0.6	1.40±0.4	7.7±0.5	14.6±0.5	22.8±0.8	35	100	2
C4S SH 31×8×5-LF	31.0±0.7	0.85±0.3	4.65±0.35	8.0±0.3	27.3±0.5	28	90	1
C4S SH 31×10×5-LF	31.0±0.7	0.85±0.3	4.65±0.35	10.0±0.3	27.3±0.5	30	95	1
C4S SH 31×12×5-LF	31.0±0.7	0.85±0.3	4.65±0.35	12.0±0.4	27.3±0.5	33	100	1
C4S SH 33.5×8×6.5-LF	33.5±0.9	1.50±0.4	6.50±0.5	8.0±0.3	27.0±0.5	28	90	1
C4S SH 33.5×10×6.5-LF	33.5±0.9	1.50±0.4	6.50±0.5	10.0±0.3	27.0±0.5	32	95	1
C4S SH 33.5×12×6.5-LF	33.5±0.9	1.50±0.4	6.50±0.5	12.0±0.4	27.0±0.5	35	100	1
C4S SH33.5×15×6.5W-LF	33.5±0.9	1.50±0.5	6.50±0.5	15.0±0.5	29.9±0.7	32	100	1
C4S SH 40×8×6.5-LF	40.0±0.9	1.30±0.3	6.50±0.5	8.0±0.3	34.8±0.6	28	90	1
C4S SH 40×10×6.5-LF	40.0±0.9	1.30±0.3	6.50±0.5	10.0±0.3	34.8±0.6	30	95	1
C4S SH 40×12×6.5-LF	40.0±0.9	1.30±0.3	6.50±0.5	12.0±0.4	34.8±0.6	33	100	1
C4S SH 45.2×8×6.5-LF	45.2±0.9	1.30 <sup>+0.5</sup> <sub>-0.3</sub>	6.50±0.5	8.0±0.3	40.0±0.9	28	90	1
C4S SH 45.2×12×6.5-LF	45.2±0.9	1.30 <sup>+0.5</sup> <sub>-0.3</sub>	6.50±0.5	12.0±0.4	40.0±0.9	32	95	1
C4S SH 49.6×12×6.5-LF	49.6±0.9	1.30 <sup>+0.5</sup> <sub>-0.3</sub>	6.50±0.5	12.0±0.4	44.0±0.9	30	95	1
C4S SH 57.6×12×6.5-LF	57.6±0.9	1.30 <sup>+0.5</sup> <sub>-0.3</sub>	6.50±0.5	12.0±0.4	52.0±0.9	32	95	1

- Testing: Impedance is tested on an HP4287A at 25MHz & 100 MHz , Electrical specifications at 25°C.
- Additional Information: Additional electrical & physical information available upon request.