



## SS1608 SERIES ~ Spring Air Core Inductors

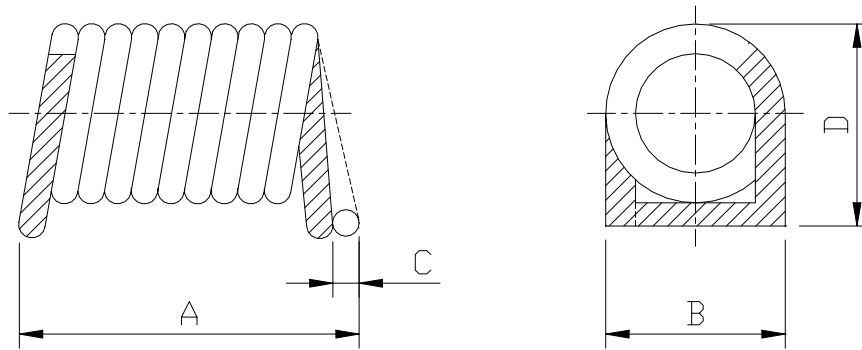


RoHS Compliant

### FEATURES

- SMD type air core inductor .
- Tape / Reel packaging available for auto-insertion .
- High Q coils .

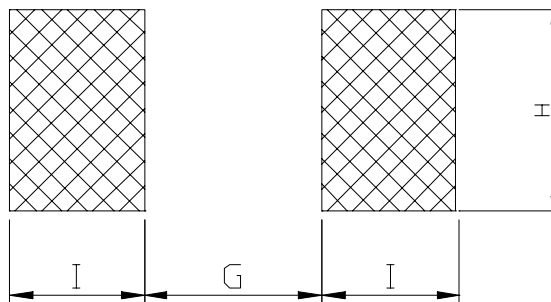
### SHAPES AND DIMENSIONS



**A=2.2 Max. B=1.6 Max. C=0-0.3 D=1.9 Max.**

### RECOMMENDED PATTERN

UNIT : mm



**G=0.75±0.1 H=1.78 Ref. I=0.75±0.05**



# SS1608 SERIES ~ Spring Air Core Inductors



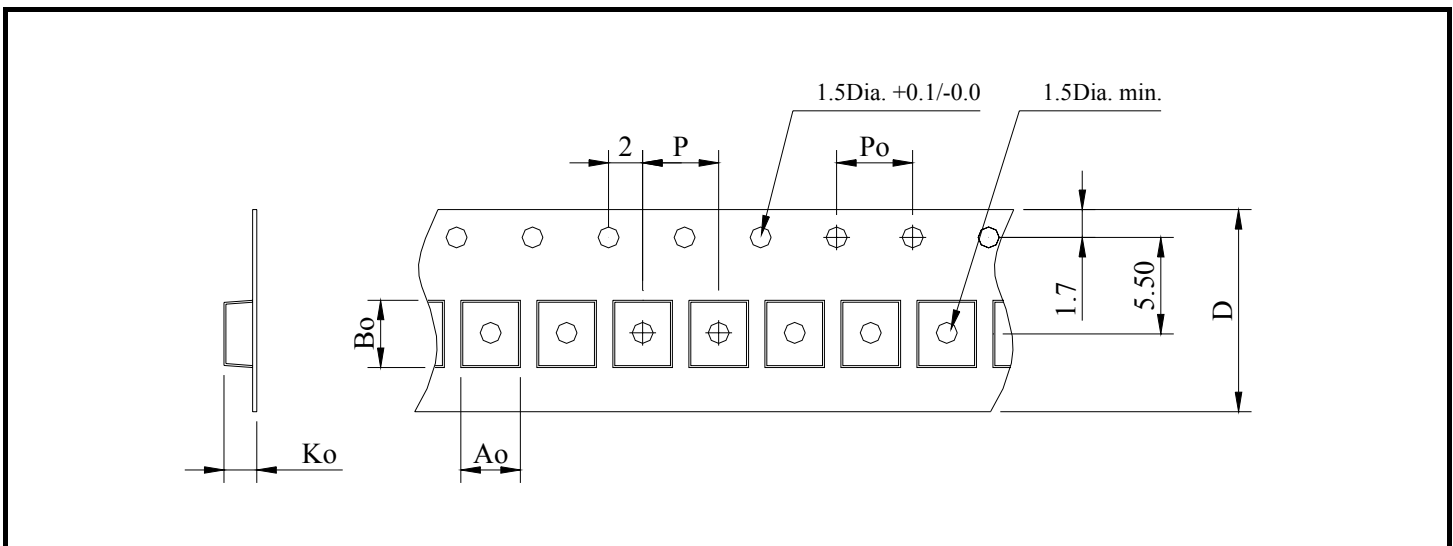
RoHS Compliant

## SS1608 SERIES

PART NUMBER	INDUCTANCE	TEST FREQ.	Q.	DCR (mΩ)	SRF (MHz)	Irms (mA)
	(nH)	(MHZ)	(Min.)	(Max)	(Min.)	(Max)
SS1608-3N9K-LF	3.9±10%	300	80	3.0	3000	950
SS1608-4N7K-LF	4.7±10%	300	80	3.6	3000	900
SS1608-5N6K-LF	5.6±10%	300	80	3.8	3000	950
SS1608-6N8K-LF	6.8±10%	300	80	4.5	3000	900
SS1608-8N2K-LF	8.2±10%	300	80	5.3	3000	840
SS1608-10NK-LF	10±10%	300	70	6.9	3000	600
SS1608-12NK-LF	12±10%	300	70	8.3	3000	600
SS1608-15NK-LF	15±10%	300	70	11.5	2500	500
SS1608-18NK-LF	18±10%	300	70	12.8	2500	500
SS1608-22NK-LF	22±10%	300	70	11.3	2400	550
SS1608-27NK-LF	27±10%	300	70	17.0	1600	500
SS1608-33NK-LF	33±10%	300	70	26.9	1600	320
SS1608-39NK-LF	39±10%	300	70	30.7	1500	320
SS1608-47NK-LF	47±10%	300	70	34.5	1500	320
SS1608-56NK-LF	56±10%	300	70	38.4	1300	320

\* Operating temperature range : -40°C to +125°C.

## PACKAGING SPECIFICATION



STAYLE	Q' TY (PCS)	DIMENSIONS (m/m)					
		Ao	Bo	Ko	P	Po	D±0.3
13"	4,000	1.55±0.1	1.65±0.1	1.75±0.1	4.0±0.1	4.0±0.1	12.0