

## SEP4520HS SERIES ~ High Current Power Inductors



### PART NUMBERING SYSTEM

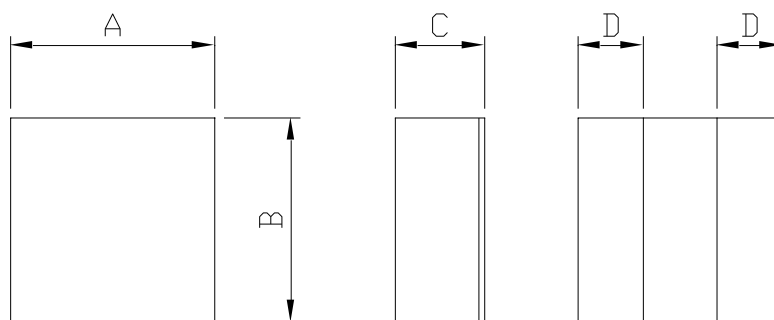
<b>SEP</b>	<b>4520HS</b>	—	<b>4R7M</b>	—	<b>LF</b>
TYPE	DIMENSIONS		INDUCTANCE		LEAD FREE

### FEATURES :

- Low profile ( 2.0mm max. height ) and 4.5X4.3 mm max. square.
- Excellent current handling – up to 10A; Exceptionally low DCR – only 9.0 mOhms
- Inductance range: 0.47  $\mu$ H – 22  $\mu$ H
- Magnetically shielded and low DC resistance and Suitable for large current .
- Excellent temperature stability for inductance and saturation .

### SHAPES AND DIMENSIONS :

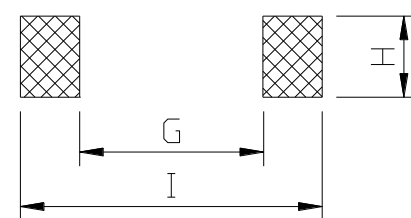
UNIT : mm



A=4.5 $\pm$ 0.25 B=4.3 $\pm$ 0.25 C=2.00 Max. D=1.3 $\pm$ 0.25

### RECOMMENDED PATTERNS

UNIT : mm



H=4.7 G= 1.7 I = 4.9



**Coilmaster Electronics Co., Ltd.**  
9F-3 No.398, Huan Bei Rd. Chung Li City, Taoyuan 320, Taiwan

Email: [sales@bec.co.uk](mailto:sales@bec.co.uk)  
Web: [www.bec.co.uk](http://www.bec.co.uk)



## SEP4520HS SERIES ~ High Current Power Inductors



### SPECIFICATION TABLE

PART NUMBER	INDUCTANCE ( $\mu$ H)	I <sub>sat</sub> ( A ) (Typ.)	I <sub>rms</sub> ( A ) (Typ.)	DCR (m $\Omega$ ) (Typ.)	DCR (m $\Omega$ ) (Max.)
SEP4520HS-R47M-LF	0.47 $\pm$ 20%	10.0	8.50	7.50	9.00
SEP4520HS-1R0M-LF	1.00 $\pm$ 20%	6.00	5.80	15.0	18.0
SEP4520HS-2R2M-LF	2.20 $\pm$ 20%	4.60	4.40	28.0	33.0
SEP4520HS-3R3M-LF	3.30 $\pm$ 20%	3.60	3.40	45.0	54.0
SEP4520HS-4R7M-LF	4.70 $\pm$ 20%	3.20	3.00	58.0	70.0
SEP4520HS-6R8M-LF	6.80 $\pm$ 20%	2.60	2.50	75.0	90.0
SEP4520HS-100M-LF	10.0 $\pm$ 20%	2.30	2.20	185	126
SEP4520HS-220M-LF	22.0 $\pm$ 20%	1.50	1.50	235	282

- I<sub>sat</sub> : DC current at which the inductance drops 30% (Max) from its value without current.
- I<sub>rms</sub> : Average current for a 40°C temperature rise above 25°C ambient.
- Test Frequency at 1MHz / 0.1V
- Operating temperature range -40°C to +125°C , Electrical specifications at 25°C.