

SEP4518HS SERIES ~ High Current Power Inductors



PART NUMBERING SYSTEM

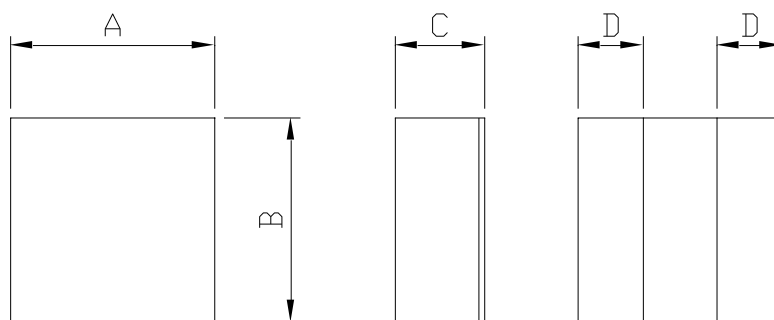
SEP	4518HS	—	3R3M	—	LF
TYPE	DIMENSIONS		INDUCTANCE		LEAD FREE

FEATURES :

- Low profile (1.8mm max. height) and 4.5X4.3 mm max. square.
- Excellent current handling – up to 8.4A; Exceptionally low DCR – only 10.8 mOhms
- Inductance range: 0.47 μ H – 22 μ H
- Magnetically shielded and low DC resistance and Suitable for large current .
- Excellent temperature stability for inductance and saturation .

SHAPES AND DIMENSIONS :

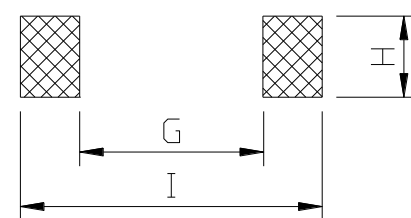
UNIT : mm



A=4.5 \pm 0.25 B=4.3 \pm 0.25 C=1.80 Max. D=1.3 \pm 0.25

RECOMMENDED PATTERNS

UNIT : mm



H=4.7 G= 1.7 I = 4.9



Coilmaster Electronics Co., Ltd.
9F-3 No.398, Huan Bei Rd. Chung Li City, Taoyuan 320, Taiwan

Email: sales@bec.co.uk
Web: www.bec.co.uk



SEP4518HS SERIES ~ High Current Power Inductors



SPECIFICATION TABLE

PART NUMBER	INDUCTANCE (μ H)	I _{sat} (A) (Typ.)	I _{rms} (A) (Typ.)	DCR (m Ω) (Typ.)	DCR (m Ω) (Max.)
SEP4518HS-R47M-LF	0.47 \pm 20%	8.40	7.80	8.90	10.8
SEP4518HS-1R0M-LF	1.00 \pm 20%	6.00	6.80	15.7	18.0
SEP4518HS-2R2M-LF	2.20 \pm 20%	4.40	4.40	33.0	39.0
SEP4518HS-3R3M-LF	3.30 \pm 20%	3.60	3.80	45.4	54.0
SEP4518HS-4R7M-LF	4.70 \pm 20%	3.40	3.40	60.0	72.0
SEP4518HS-6R8M-LF	6.80 \pm 20%	2.50	2.80	96.0	115
SEP4518HS-100M-LF	10.0 \pm 20%	2.20	2.20	131	157
SEP4518HS-220M-LF	22.0 \pm 20%	1.60	1.50	263	315

- I_{sat} : DC current at which the inductance drops 30% (Max) from its value without current.
- I_{rms} : Average current for a 40°C temperature rise above 25°C ambient.
- Test Frequency at 1MHz / 0.1V
- Operating temperature range -40°C to +125°C , Electrical specifications at 25°C.