



**Coilmaster Electronics Co., Ltd.**  
 9F-3 No.398, Huan Bei Rd. Chung Li City, Taoyuan 320, Taiwan

Email: [sales@bec.co.uk](mailto:sales@bec.co.uk)  
 Web: [www.bec.co.uk](http://www.bec.co.uk)



## SEP1205M SERIES ~

### High Current SMD Power Inductors

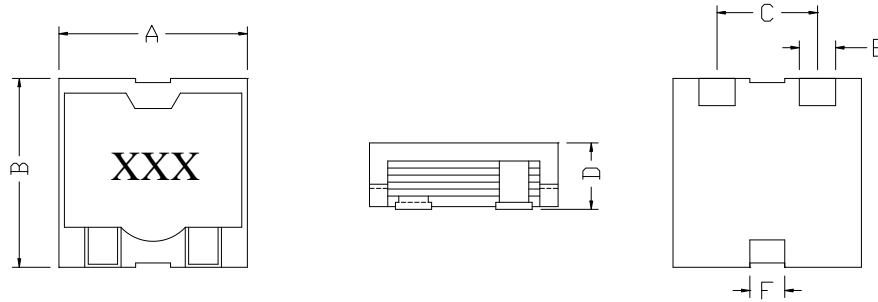


#### PART NUMBERING SYSTEM

<u>SEP</u>	<u>1205M</u>	—	<u>4R7M</u>	—	<u>LF</u>
TYPE	DIMENSIONS		INDUCTANCE		LEAD FREE

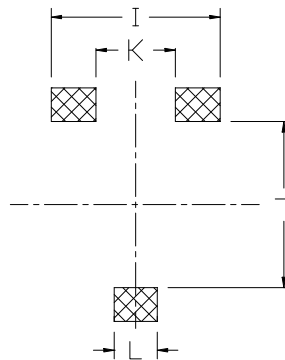
#### SHAPES AND DIMENSIONS :

UNIT : mm



A=12.9 Max. B=12.9 Max. C=7.0 D=5.7 Max. E=2.6 F=2.5

#### RECOMMENDED PATTERNS



I = 10.0 J = 8.29 K = 4.0 L = 3.0

UNIT : mm



**Coilmaster Electronics Co., Ltd.**  
9F-3 No.398, Huan Bei Rd. Chung Li City, Taoyuan 320, Taiwan

Email: [sales@bec.co.uk](mailto:sales@bec.co.uk)  
Web: [www.bec.co.uk](http://www.bec.co.uk)



## SEP1205M SERIES ~

### High Current SMD Power Inductors



#### ELECTRICAL CHARACTERISTICS :

PART NUMBER	INDUCTANCE ( $\mu$ H)	Isat ( A ) (Max.)	Irms ( A ) (Max.)	DCR (m $\Omega$ ) (Max.)	TEST FREQ. ( f )
SEP1205M-R68M-LF	0.68 $\pm$ 20%	20.4	19.5	1.5	100KHz
SEP1205M-1R5M-LF	1.5 $\pm$ 20%	14.0	18.0	2.2	100KHz
SEP1205M-2R5M-LF	2.5 $\pm$ 20%	10.0	15.5	3.4	100KHz
SEP1205M-4R0M-LF	4.0 $\pm$ 20%	8.30	12.5	5.4	100KHz
SEP1205M-6R0M-LF	6.0 $\pm$ 20%	6.70	9.90	8.0	100KHz
SEP1205M-8R2M-LF	8.2 $\pm$ 20%	5.80	8.20	11.4	100KHz
SEP1205M-100M-LF	10.0 $\pm$ 20%	5.00	7.60	13.5	100KHz

\* Operating temperature range : -40°C to + 125 °C. Electrical specifications at 25 °C

\* Isat: DC current at which the inductance drops 35% (tolerance $\pm$ 30%) from its value without current.

\* Irms: Average current for a 40°C rise above 25°C ambient.

\* Electrical specifications at 25°C.