



Surface Mount 10Base-T Interface Transformers

PART NUMBERING SYSTEM

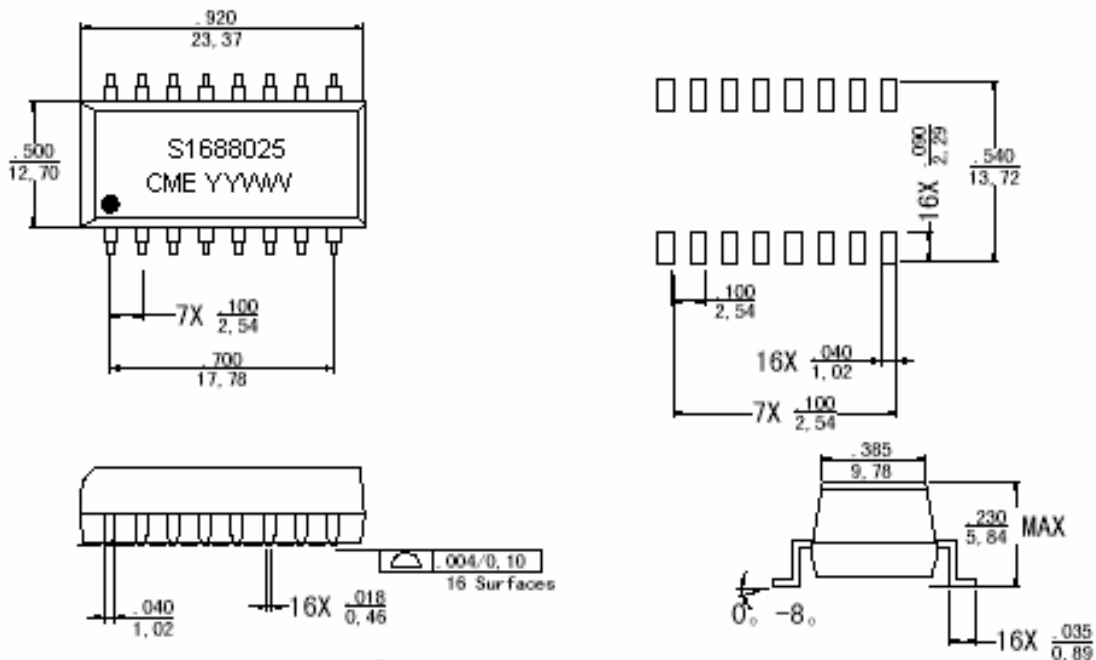


FEATURES

- Fully integrated for Adaptor , Hub, and Motherboard applications
- Add Suffix LF for RoHS compliant
- **RoHS compliant peak solder rating 235°C**

SHAPES AND DIMENSIONS

Mechanicals



Dimensions: Inches

Unless otherwise specified, all tolerances are $\pm .010$
0,25

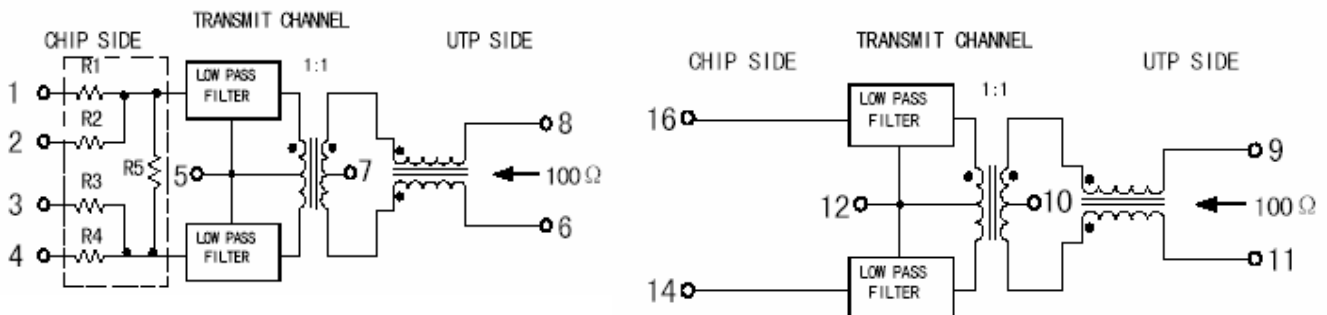


Surface Mount 10Base-T Interface Transformers

Resistor Values (ohm)

Part Number	IC Manufacturer	R1	R2	R3	R4	R5	R6	R7
S16-88025-LF	AMD	TXD(+)=61.9	TXP(+)=422	TXD(-)=61.9	TXP(-)=422	1.2K	RX(+)=49.9	RX(-)=49.9
S16-88026-LF	Various	N/A	N/A	N/A	N/A	N/A	N/A	N/A
S16-88027-LF	National	TXO(-)=274	TXO(+)=66.5	TXO(-)=66.5	TXOD(+)=274	806.0	RX(+)=49.9	RX(-)=49.9

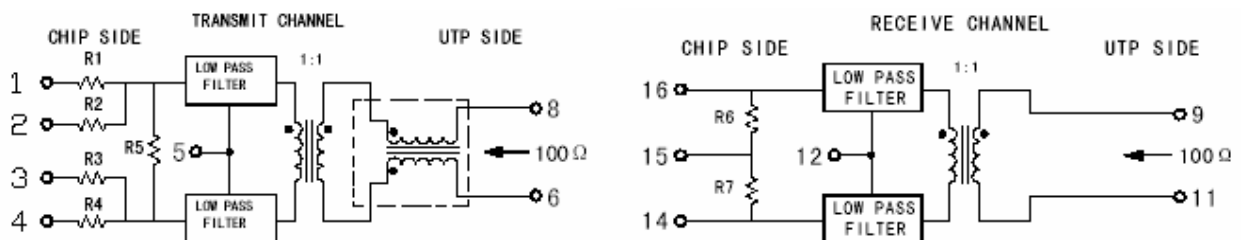
S16-88025, S16-88026-LF , S16-88027-LF



Resistor Values (ohm)

Part Number	IC Manufacturer	R1	R2	R3	R4	R5	R6	R7
S16-2001-LF	National	348.0	53.6	53.6	348.0	806.0	49.9	49.9
S16-2003-LF	AMD	61.9	422.0	61.9	422.0	1210.0	49.9	49.9
S16-2007-LF	Motorola	39.0	N/A	39.0	N/A	N/A	49.9	49.9

S16-2001-LF , S16-2003-LF , S16-2007-LF





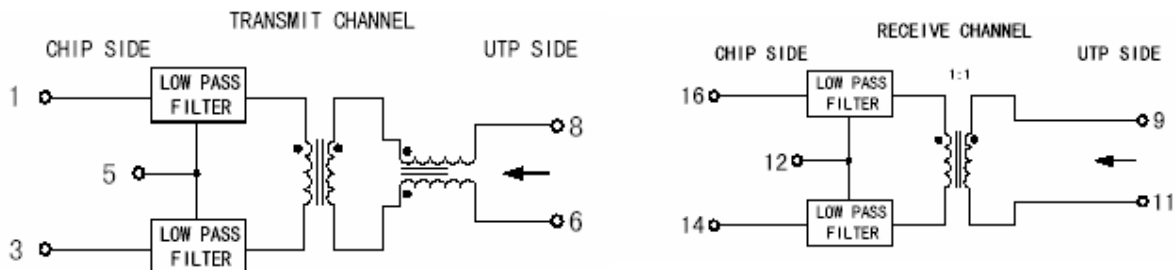
10/100Base-T Singel Port Transformers



RoHS Compliant

Schematics

S16-1117-LF , S16-1178-LF



Note : The S16-88056-LF is designed for use with most transceivers requiring a turns ratio of 1:1 on transmit.

The S16-2009-LF is designed for use with DEC and most other transceivers requiring a turns ratio of 1:1.414 on transmit.

ELECTRICAL CHARACTERISTICS @ 25°C --- Operating Temperature 0°C to 70°C

PART NUMBER	Insertion Loss (dB Min)	Attenuation (XMIT) (dB Min)			Return loss 5 to 10MHz (dB Min)		Crosstalk (dB Min)	Common Mode Rejection (XMIT) (dB Min)					Hipot (Vrms Min)
		30MHz	40MHz	100MHz	100Ω	98±13Ω		5-10MHz	5MHz	10MHz	50MHz	100MHz	
S16-88025-LF	-6.0	-35	-35	-35	-18	-15	-35	-60	-60	-55	-50	-45	1500
S16-88026-LF	-1.0	-30	-35	-35	-18	-15	-35	-60	-60	-55	-50	-45	1500
S16-88027-LF	-6.5	-35	-35	-35	-18	-15	-35	-60	-60	-55	-50	-45	1500
S16-88056-LF	-1.0	-30	-27	-27	-18	-15	-30	-40	-30	-50	-45	--	1500
S16-2001-LF	-5.5	-30	-30	-35	-18	-15	-30	-35	-30	-55	-50	--	1500
S16-2003-LF	-5.0	-30	-27	-27	-18	-18	-35	-40	-35	-45	-30	--	1500
S16-12007-LF	-5.0	-30	-35	-40	-18	-15	-25	-35	-30	-55	-50	--	1500
S16-2009-LF	-1.0	-30	-27	-27	-18	-15	-35	-40	-35	-45	-45	--	1500