

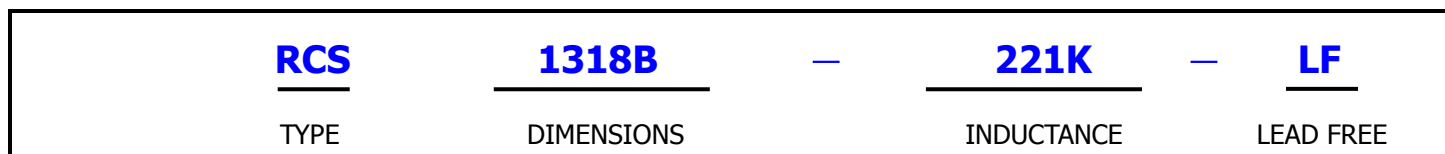
RCS1318B SERIES ~ Through Hole Shielded Inductors



FEATURES

- Magnetically shielded construction and low leakage flux type .
- 7.5mm-pitch , 2 terminal fixed inductor .
- Lead free and RoHS compliant
- Ideal for use as choke coil for high current DC-DC circuit in all types of electronic instruments .

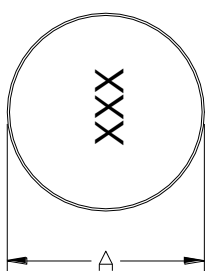
PART NUMBERING SYSTEM



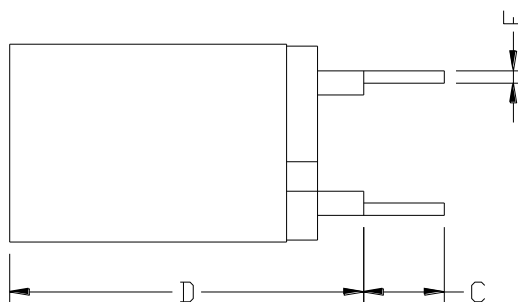
SHAPES AND DIMENSIONS

UNIT : mm

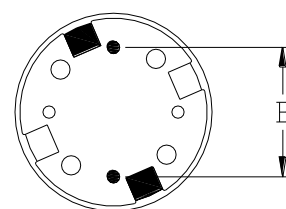
TOP VIEW



FRONT VIEW



BOTTOM VIEW



A=13.5 Max. B=7.5 Ref. C=4.0 Ref. D=18.5 Max. E=0.7 Ref.



RCS1318B SERIES ~ Through Hole Shielded Inductors



SPECIFICATION TABLE

PART NUMBER	INDUCTANCE (μ H)	DCR (Ω) (Max.)	IDC (A) (Max.)	TEST FREQ. (f)
RCS1318B-100K-LF	10 \pm 10%	0.0370	7.50	1KHz
RCS1318B-150K-LF	15 \pm 10%	0.0447	6.00	1KHz
RCS1318B-180K-LF	18 \pm 10%	0.0662	5.50	1KHz
RCS1318B-220K-LF	22 \pm 10%	0.0739	5.00	1KHz
RCS1318B-240K-LF	24 \pm 10%	0.0770	4.80	1KHz
RCS1318B-270K-LF	27 \pm 10%	0.0831	4.50	1KHz
RCS1318B-330K-LF	33 \pm 10%	0.0908	4.00	1KHz
RCS1318B-390K-LF	39 \pm 10%	0.0970	3.70	1KHz
RCS1318B-470K-LF	47 \pm 10%	0.132	3.50	1KHz
RCS1318B-560K-LF	56 \pm 10%	0.154	3.00	1KHz
RCS1318B-680K-LF	68 \pm 10%	0.200	2.70	1KHz
RCS1318B-820K-LF	82 \pm 10%	0.225	2.50	1KHz
RCS1318B-101K-LF	100 \pm 10%	0.248	2.20	1KHz
RCS1318B-121K-LF	120 \pm 10%	0.279	2.00	1KHz
RCS1318B-151K-LF	150 \pm 10%	0.450	1.80	1KHz
RCS1318B-181K-LF	180 \pm 10%	0.501	1.70	1KHz
RCS1318B-221K-LF	220 \pm 10%	0.550	1.50	1KHz
RCS1318B-271K-LF	270 \pm 10%	0.600	1.20	1KHz
RCS1318B-331K-LF	330 \pm 10%	0.700	1.10	1KHz
RCS1318B-391K-LF	390 \pm 10%	1.40	1.00	1KHz
RCS1318B-471K-LF	470 \pm 10%	1.50	0.90	1KHz
RCS1318B-561K-LF	560 \pm 10%	1.60	0.85	1KHz
RCS1318B-681K-LF	680 \pm 10%	1.80	0.80	1KHz
RCS1318B-821K-LF	820 \pm 10%	2.20	0.70	1KHz
RCS1318B-102K-LF	1000 \pm 10%	2.50	0.50	1KHz

- Inductors tolerance K= \pm 10% .
- DC current at which the inductance drops 10% (typ) from its value without current.
- Operating temperature range -25 $^{\circ}$ C to +105 $^{\circ}$ C ,
- Electrical specifications at 20 $^{\circ}$ C.