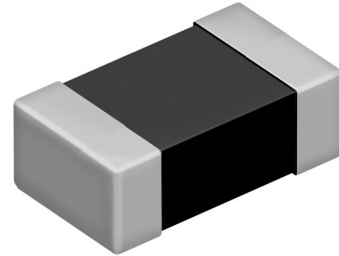


MDT2016-CR Type

Multilayer Ceramic chip power inductor

DESCRIPTION

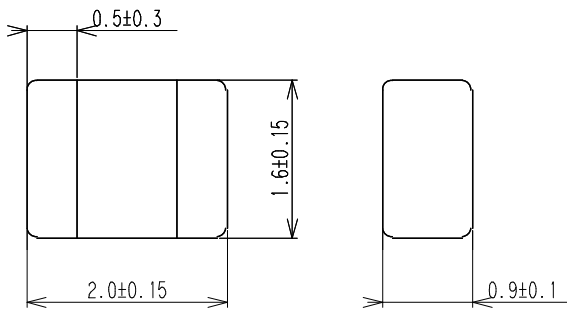
- The TOKO MDT2016 Series is an extremely low profile and miniature size multilayer ceramic chip power inductor with a maximum height of 1.0mm and with 2016 footprint (2.0mm×1.6mm).
- The product is magnetically shielded and designed for space constrained DC-DC converter applications in portable platforms including SmartPhone, DSC,DVC, PDA ,DVD,HDD and Handheld Computers.



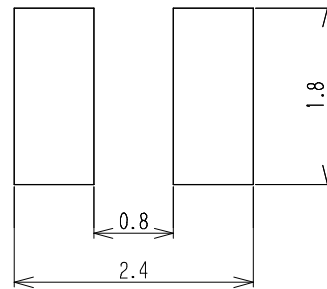
Features

- Miniature size: 2016 footprint (2.0mm×1.6mm) and low profile(1.0mm max.height)
- Magnetically shielded
- Reflow solderable
- Lead-free product
- Operating temperature:-40 ~ 125°C

Dimensions



Recommended land pattern

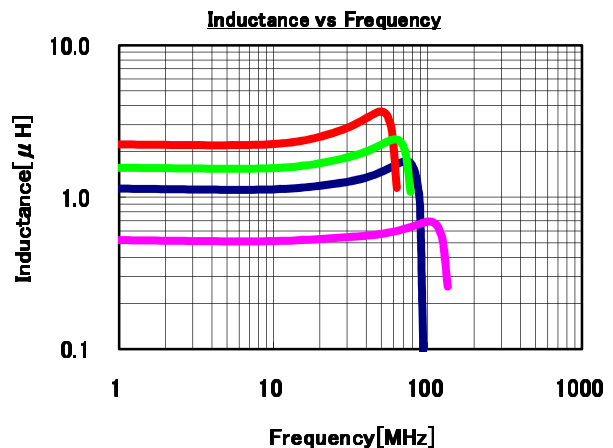
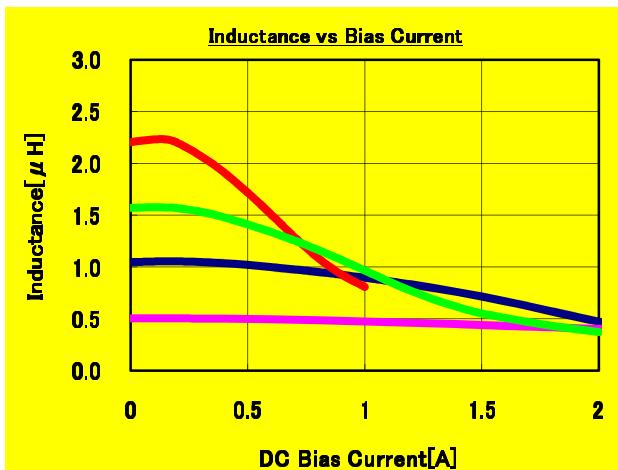


UNIT : mm

Preliminary Specifications

TOKO No.	Inductance [μH] at 1MHz	Rdc [mΩ]	Rated DC Current [A] *
MDT2016-CRR47MDD	0.47 ± 20%	70 ± 30%	2.30 max.
MDT2016-CR1R0MDD	1.0 ± 20%	90 ± 30%	2.05 max.
MDT2016-CR1R5MDD	1.5 ± 20%	100 ± 30%	1.95 max.
MDT2016-CR2R2MDD	2.2 ± 20%	110 ± 30%	1.85 max.

* The current at which a coil temperature to rise by 40°C



Caution

1. このカタログの記載の製品について、極めて高い信頼性が要求される用途での使用をご検討の場合、またはこのカタログに記載された用途以外での使用をご検討の場合は、必ず事前に当社営業窓口までご相談下さい。
 2. このカタログの記載内容は2013年5月現在のものです。記載内容を予告なく変更することがありますのでご了承ください。ご注文に際しては仕様・納入仕様書などの取り交わしをお願いします。
 1. Please be sure that you carefully discuss your planned purchase with our sales division if you intend to use the products in this catalog or if you intend to use products for applications other than those listed in this catalog.
 2. Contents of this catalog are effective as of May, 2013. Note that the contents of this catalog are subject to change without notice. When placing your order, please confirm the specifications and delivery conditions.