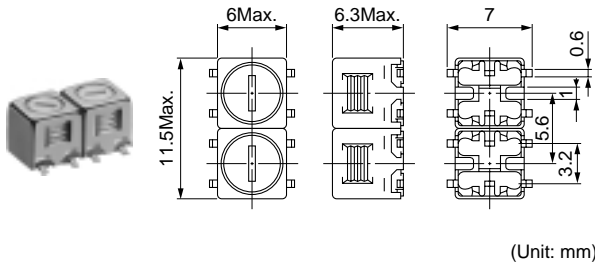


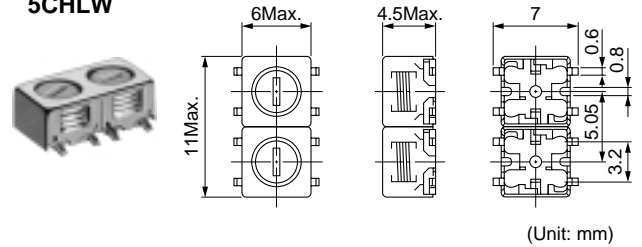
5CHLW Double Tuned, 5CHW Double Tuned, 5CHT Triple Tuned

Frequency Range: 5CHLW 780~1150MHz
5CHW, 5CHT 400-520MHz

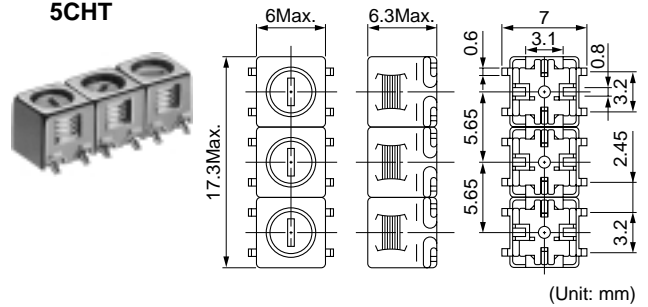
5CHW



5CHLW



5CHT



Features

- Compact low-profile helical filters for surface mounting, ideal for mobile communications equipment.

Applications

- Surface mounting type: Cellular, cordless telephones, paging devices.

特長

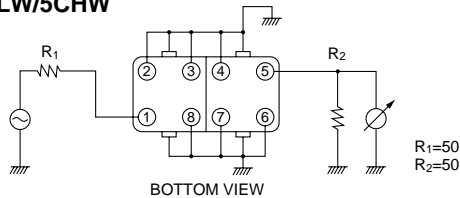
- 移動体通信用に最適な小形薄形の面実装形ヘリカルフィルタ

用途

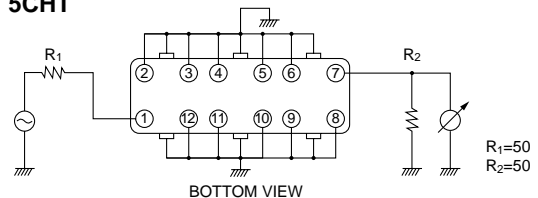
- 面実装タイプ：自動車電話、コードレス電話、ページング受信機

Test circuits 測定回路

5CHLW/5CHW



5CHT



SELECTION GUIDE FOR STANDARD FILTERS

TYPE 5CHLW (Double tuned)

東光品番	中心周波数	帯域幅	選択度		リップル	挿入損失
TOKO Part Number	Center Frequency (MHz)	Bandwidth (-1dB) (MHz) min.	Selectivity		Ripple (dB) max.	Insertion Loss (dB) max.
			Fo - 100MHz (dB) min.	Fo + 100MHz (dB) min.		
477MS-1031A	832.5	25	25	18	1.0	2.5
477MS-1032A	850	25	25	17	1.0	2.5
477MS-1033A	870	25	25	18	1.0	2.5
477MS-1034A	902.5	25	24	18	1.0	2.5
477MS-1035A	915	25	25	18	1.0	2.5
477MS-1036A	933	25	25	18	1.0	2.5
477MS-1037A	947.5	25	25	18	1.0	2.5
477MS-1038A	950	25	22	17	1.0	2.5

continued from previous page
 前頁より続く

SELECTION GUIDE FOR STANDARD FILTERS

TYPE 5CHW (Double tuned)

東光品番	中心周波数	帯域幅	選択度		リップル	挿入損失
TOKO Part Number	Center Frequency (MHz)	Bandwidth (-1dB) (MHz) (dB) min.	Fo - 50MHz (dB) min.	Fo + 50MHz (dB) min.	Ripple (dB) max.	Insertion Loss (dB) max.
492S-1051A	420	10	14	20	0.5	3.0
492S-1052A	425	10	14	20	0.5	3.0
492S-1053A	427	10	14	20	0.5	3.0
492S-1054A	430	10	14	20	0.5	3.5
492S-1055A	435	10	14	20	0.5	3.5
492S-1056A	440	10	13	18	0.5	3.5
492S-1057A	450	10	12	17	0.5	3.5
492S-1058A	452	10	12	17	0.5	3.5
492S-1059A	456	10	12	16	0.5	3.5
492S-1060A	460	10	12	16	0.5	3.5
492S-1061A	463.5	10	12	16	0.5	3.5
492S-1062A	465	10	12	16	0.5	3.5
492S-1063A	470	10	12	15	0.5	3.5
492S-1064A	480	10	12	15	0.5	3.5
492S-1065A	510	10	12	15	0.5	3.5

TYPE 5CHT (Triple tuned)

東光品番	中心周波数	帯域幅	選択度		リップル	挿入損失
TOKO Part Number	Center Frequency (MHz)	Bandwidth (-1dB) (MHz) (dB) min.	Fo - 50MHz (dB) min.	Fo + 50MHz (dB) min.	Ripple (dB) max.	Insertion Loss (dB) max.
493S-1066A	395	10	33	33	0.5	4.5
493S-1067A	420	10	30	30	0.5	4.5
493S-1068A	425	10	30	30	0.5	4.5
493S-1069A	430	10	30	30	0.5	4.5
493S-1070A	435	10	30	30	0.5	4.5
493S-1071A	440	10	27	27	0.5	4.5
493S-1072A	450	10	27	27	0.5	4.5
493S-1073A	452	10	27	27	0.5	4.5
493S-1074A	456	10	27	27	0.5	4.5
493S-1075A	460	10	27	27	0.5	4.5
493S-1076A	465	10	27	27	0.5	4.5
493S-1077A	470	10	27	27	0.5	4.5
493S-1078A	480	10	26	26	0.5	4.5
493S-1079A	485	10	26	26	0.5	4.5
493S-1080A	510	10	25	25	0.5	4.5